

TT 520
279

TT 520
.C79
Copy 1

CORNWELL'S

NEW IMPROVED 1885.

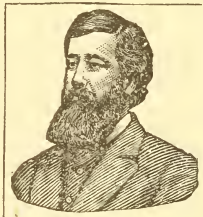
—Self-Fitting—

Chart & Sleeve System.



FOR

CUTTING



LADIES', MISSES', AND CHILDREN'S

DRESSES,

CLOAKS, BASQUES & POSTILLIONS.



FEB 27 1885

TRADE MARK
REGISTERED

Feb. 11, 1873,
RE-ISSUED

May 30, 1876.



PRINCIPAL OFFICE IN THE U. S.,
1229 WABASH AVE., CHICAGO.

Entered, according to Act of Congress, in 1885 by WILLETT CORNWELL, in the Office of the Librarian of Congress at Washington, D. C.

INTERNATIONAL EXHIBITION.

PHILADELPHIA, 1876.

The United States Centennial Commission has examined report of the Judges, and accepted the following reasons, decreed an award in conformity therewith.

Philadelphia, Dec. 21st, 1876.

REPORT ON AWARDS.

Product, *Graduated Chart for Dress Cutting*
 Name and address of Exhibitor, *Willett Cornu*
No. 153 North Eighth St., Philadelphia,

The undersigned, having examined the product herein described, respectfully recommends the same to the United States Centennial Commission for Award, for the following reasons,

*Originality, well fitted
 the purpose intended, and
 economical in cost.*

W. O. Linthicum,
 Signature of the

APPROVAL OF GROUP JUDGES.

*Dietz Monnin,
 M. P. Empey,
 B. F. Britton,
 W. H. Chandler,*

*Modest Kittar
 Kanitz,
 Geo. Hewston,
 E. N. Horsford*

A true Copy of the record.

Francis A. Walker,
 Chief of the Bureau of Awards

Given by authority of the United States Centennial Commission



A. T. GOSHORN,
 Director-General.

J. L. CAMPBELL,
 Secretary.

J. R. HAWLEY,
 President.

INDEX

Cornwell's Purchasing Agency on Cover.	
Fac-simile Report of Award Given by Centennial Commission	2
Introductory	4
To the Public.....	5, 6, 7, 8, 9
Cornwell's New Sleeve System.....	10
To Our Agents and Their Scholars.....	11, 12, 13
How to Procure the Latest Improved.....	14, 15
Where Agents Sign Their Names.....	15
Our Premiums	16
Our Regular Yearly Prize to Purchasers.....	16
Special Premiums to Purchasers.....	17
Send Us \$8, How to Send Money, etc.....	17
How We Send Charts and Sleeve Systems	17
Lady Agents Wanted Everywhere.....	18
To Dressmakers.....	19, 20
Send for Private Terms—We Will Reward, etc	20
Design AA Cut of Plain Waist.....	21
Cut of Measurement	22
Directions for Using Cornwell's Improved System..	23, 24, 25, 26, 27
Cut the Front Waist First	24, 25
Cut the Back Waist.....	26, 27
Special Sleeve Notice	27
Additional Important Directions, etc.....	28
Neck Size, Back Forms, Mark the Lines, Skirts, Allow for Seams, Garibaldis and Velvet Garments.....	29
Open Backs, Low Necked Dresses, Yokes, Shoulder Seams.....	30
Back Dart, Under Arm Seam, Fit Outsides to Tight Linings, Lap in Front, Sewing on Dress Braid, Stretch Skirt of Basque, Hook and Eye Pieces, Whale Bones, Clip the Seams, To Finish Inside of Waist.....	31
Dolman, Cut Fig. F.....	32, 33
Dolmans, Directions for Cutting and Making.....	34, 35, 36
French, English and Common Sleeves.....	37
Directions for Cutting Polonaise, Basque and Wrapper.....	39, 40
Polonaise, Basque and Wrapper, Front and Back, Cut A and B.	41
Walking Coat, Front and Back Cut and Directions.....	42, 43
Ladies' Drawers, Cut and Directions.....	44, 45
Postillion or Riding Habit Directions and Cut.....	46
Sack Chemise, Cut and Directions.....	47
Skirt Directions and Cut	48
To Cut a True Bias, Directions and Cut.....	49
Directions for Using Sleeve System.....	50
Photo Engraving of Our New Sleeve System.....	51
A Miniature Chart Before Last Great Improvement.....	52
A Few of the Million Letters Received....	53, 54, 55, 56, 57, 58, 59, 60

CH 10-3289 Union

INTRODUCTORY.

We invite special attention to this enlarged Instruction Book, which has been prepared **exclusively** for our Agents and those using our Self-fitting System of Cutting.

We have made these Illustrated **Instructions** so plain, and our Chart and Sleeve System with holes and figures so simple, that any person with ordinary intelligence can readily become a practical Dressmaker in a short time without the aid of a teacher. For any lack of competence on the part of the learner, draft out a pattern and send it to us for inspection.

The principles of this Self-Fitting System were first thought of by Miss Elmira Harroun (now Mrs. Cornwell) at 16 years of age.

Her first Chart was a rough piece of pasteboard, on which the method of fitting the shoulder and ascertaining the size of the darts were marked with pen and ink, a puzzle which no one could figure out until Mr. Cornwell, a practical business man full of inventive faculties, discerning the great value of that unburnished diamond in his wife's cherished pasteboard, undertook to make it so plain that "he who runs may read."

After six months of hard study, a wood cut was obtained, a few Charts printed. These being tested, brought out valuable improvements. Within a year a Copper-Plate was obtained in New York, the engraving of which consumed months. From this Plate, the first Charts were manufactured in 1870. In 1876 we made our first set of Improved Colored Nickel Chart Engravings. It was this Improved System that received the Medal and Diploma at the Centennial Exhibition that year. Since then we have made many important changes, the last of which was making the Darts smaller and providing for an Underarm Dart, thus meeting the wants of the prevailing style. About this time we invented our **New Sleeve System**, which has satisfactorily filled a great popular demand in connection with our Chart.

We have received Four Patents, nearly a score of Copyrights, and our **Trade Mark**—"Cut of Measurement"—extending to us 3 years' protection.

Our present Improved System of Cutting is the result of 1 years' experience, during which time we have spared neither expense nor pains to make it a **Perfect Method** for cutting Ladies', Misses', Children's and Infants' Garments of every description.

We have sold over a quarter of a million Systems without hearing the first complaint. Our Agents number over 20,000, who are selling more for us to-day than is sold of all the worthless things claiming similar merit in the country combined.

We gain the confidence of our Agents and Canvassers by protecting them in their work, never sending into their territory our private terms, or allowing other Agents to interfere.

We want the name, P. O. address and occupation of every Chart purchaser on our **Premium List**.

Lady Canvassers and Local Agents wanted everywhere. Send to us for **Private Terms**, showing how to make money easily where there is no Agent at work.

Send postage for Chart and Instruction Book. Twenty cents to pay postage, if you feel able, will insure you a large lot of printed matter free. Every Lady writing us will receive a present free.

WILLETT CORNWELL, 1229 Wabash Ave., Chicag.

CORNWELL'S

1885. NEW IMPROVED 1885.

—Self-Fitting—

Chart Sleeve System.

WILLETT CORNWELL,
Inventor and Sole Manufacturer

AMONG the latest practical achievements of human ingenuity, none challenge higher admiration than those calculated to enlarge the sphere of female usefulness. Second in value to none of these inventions stands **Cornwell's Improved Self-Fitting Chart**, as is fully attested by the cordial welcome accorded it wherever introduced, and the complete reliance placed upon it by all experts in dress-making. Ladies who recollect with horror the many closeted trials of disrobed endurance with the sisters of the pins and needles, will not refuse a half hour of their valuable time in investigating the merits of this truly useful and wonderful invention, and will doubtless be no less surprised than delighted to learn that dresses can be made up to fit perfectly any and all of the many dissimilar forms, without the annoyance of trying them on, by the use of **Cornwell's** simple but accurately working plan.

Mothers, ask your sons,—wives, ask your husbands,—if they could endure the cut-and-try-on system in the fitting and making up of a coat. Garments for the male form are made to fit perfectly by rule, without this annoyance, but that rule, in order to be practical, must be unerring and complete. This is precisely what we claim ours to be.

Cornwell's Celebrated Self-Fitting Chart, with its figures, holes, and plain directions is an infallible guide by which any lady with a few moments' attention, can cut a garment for herself or any other person to fit perfectly, without changing a single stitch, the first time trying on.

It is truly remarkable how slow has been the progress in this matter from time immemorial; and indeed it is only since the introduction of this valuable method that it was possible to convince the ladies of this country that the old-fashioned mode of fitting, so full of torture and so trying to their patience, was no longer a necessity, and that it may be forever laid aside, as useless and out of date, so soon as this **Chart** has once been fairly introduced, and its wonderful workings fully understood.

To those familiar with this **Self-Fitting Chart**, trying, fitting and pinning to the form becomes entirely unnecessary and absurd, and thus *Dressmaking*, for the first time, takes its rightful place among the useful arts.

More than this, the elegance of form produced by the use of this **Self-Fitting Chart** exceeds everything hitherto known in the art of Dressmaking. No former invention equals this in accuracy and perfect adaptability in fitting any form, however disproportioned it may be. **So simple is this Self-Fitting Chart, that a knowledge of its working can be obtained from a few moments' instruction. The mere novice can comprehend it, and thus every woman can become her own Dressmaker** There is a peculiar fascination, too, in every garment cut by it; so much so, that the style of the dress is readily distinguishable from those cut by any other method.

To substantiate the many statements made in its favor, investigate thoroughly for yourself, or read a few of the more than **fifty thousand certificates** given to us by the leading fashionable dressmakers of the country.

In short, *it cannot fail, its every principle being based upon*

exact mathematical rules. A brief comparison will show wherein this **Self-Fitting Chart** differs from, and is an improvement over any and all other systems now in use.

In the first place, no other inventor has discovered the important measure taken from the upper edge of the neck-band, at the side of the neck, down on top of the shoulder to the hollow or clavical space, a rule which never fails, whatever peculiarity there may be in the shape of the shoulder, and thus round, square, sloping, or hollow shoulders are perfectly fitted by this simple shoulder measurement alone.

Then no other inventor has invented this mode of *subtracting the measure around the waist from the measure around the bust, putting the difference between the two measures, or taper of the waist, in the darts.* This rule, peculiar to this **Self-Fitting Chart**, whereby these darts or biases are formed, is a correct and unvarying one, and *directly the reverse* of all other models or systems in existence.

The United States Government, after examining the numberless methods in vogue for cutting male garments, appropriated the best features of each, and from them produced a rule both simple and complete, by which all the garments required by the army are made. By it, each separate part, as the collar, side-body, back, sleeves, etc., are cut in different sizes and classified, the whole, when brought together, harmonizing perfectly, and so all sizes are readily fitted, and the tedious process of trying on avoided. Hitherto no general rule has been put forward by which female apparel can be thus accurately and expeditiously cut and made up from measurement alone. This need, so obvious and pressing, we claim our **Self-Fitting Chart** will satisfy, and so convinced are we of its entire adaptability to the wants of ladies making their own dresses that we court for it the severest tests in the most intricate cases, feeling sure that the longer it is experimented with, the more fully will the user be convinced of its usefulness and its superiority over all other plans.

We refer again to our method of obtaining the waist measure. If there was no taper to the waist there would be no darts or biases required in the dress; or in other

words, if the bust measure was no greater than the waist measure, there would be no taper, therefore no darts. The difference between the waist and the bust measure, that is *the taper of the waist, determines the size of the darts.*

For illustration.—If a given bust measures 38 inches and the waist 24 inches, the difference, which is 14 inches will be the exact amount which must be taken up in the darts. Now, with the same bust measure and a waist two inches larger, of course the taper is two inches less, requiring 2 inches less for darts; this, then, is the rule; *the less the difference between the size of the waist and the size of the bust the less the taper, and consequently the narrower the darts, and the greater the difference the greater the taper, therefore the wider the darts, and thus an unvarying mathematical principle is established in following which a misfit becomes impossible.*

Hitherto, from the time of the invention of the first character (Fowler's Theorem, erroneously called Fowler & Wells' some 40 years ago, no true and universal rule has been advanced, by which to fit the taper of the waist accurately—most all having adopted the rule—"the larger the waist, the larger the darts," without regard to the size of the bust or the taper of the waist. In other models there is little or no variation in the width of darts, they being usually about 1 1/2 inches wide—the same for great as well as small tapers.

Our theory of fitting the waist is exactly the *opposite* to this, we claiming the bust to be the only part the darts are supposed to provide for and fit; and to attest its superiority in all points we refer to the unanimous verdict of more than a hundred thousand who daily use and advocate it, having abandoned all false theories.

Another erroneous principle in all other methods is that of cutting off the cloth at the side seams, and putting in narrower darts, thus creating a continual drawing down across the bust from the back of the neck, without any apparent cause, thereby destroying the symmetry, and making the dress set uncomfortable to the wearer. Our system *obviates* all this, by gathering up the whole taper of the waist in darts and placing them directly under the projection in front.

These invaluable rules are as much a requisite for a good experienced dress-maker to make up an elegant fitting dress, as a 24-inch square is to the mechanic in laying out his work, no matter how much practice she may have had in the old art of cut-and-try-on. A carpenter would be at a loss to build a flight of stairs or do any other

exact piece of work, without a rule or square, the main working tool of his profession. This rule applies to the practical mantua-maker, no less than to the unskilled housewife.

This **Self-Fitting Chart** can also be used in cutting tight-fitting cloaks, basques and sacques, while the whole upper portion can be made available in cutting coats, its rules forming an infallible guide in cutting any garment requiring a nice waist or shoulder fit.

This **Self-Fitting Chart** is composed of only two pieces, and in them is embodied more than in any and all other charts, models or systems combined, providing as it does for **26** waist sizes, **26** bust sizes, **26** neck sizes, **9** shoulder measures, **15** dart sizes or taper measurements, and an **18** inch gauge for cutting Trimmings, and a rule for drawing a complete back form, together with a scale of sizes sufficiently ample to embrace every variety of form, either of children or adults.

It is the only system in the world that will produce a perfect-fitting dress from measurement. It will transform an ordinary apprentice girl into a first-class dressmaker in a few hours. Furthermore, the proprietor agrees to forfeit \$5,000 wherever this **Self-Fitting Chart** fails to fulfil all that is claimed for it.

This **Self-fitting System** is never sold in paper sheets, but are always made of the best material possible, which will last a dress-maker for years, all tastefully finished and ready for use. They are beautiful in color and design, an ornament to any drawing room and a twin sister to a sewing machine.

Principal American Office,

1229 WABASH AVE.

Between 12th and 13th Sts.

CHICAGO, ILL.

Improv'd Self-Fitting System for Cutting Sleeves

This new System will cut sleeves of all sizes, for both children and adults, and works perfectly in connection with the Cornwell Self-fitting Chart in dress cutting.

This new Sleeve System, we are bold to say, is no guess-work method for Cutting Sleeves, but a perfect success in all its workings. It is an invention of much study and experience, and is the first and only one in existence deserving the name of Sleeve System, and we are proud that it is receiving the unbounded success it so richly deserves. It is beautiful in design, simple in construction, and worth more than ten times its cost to the happy possessor. Any lady can use it; needs no instruction, and **cuts all sizes perfectly** without refitting. We know from years of experience that this **great want** so long felt is now **fully met** by this never-failing **sleeve system**. It is but the work of a moment to cut to a certainty by this method, without waste of material, a pair of sleeves of any size, to fit perfectly without refitting. We claim that enough material can be saved by this **new system** in cutting a few sleeves, to more than pay its first cost. It is undeniable that great trouble is always experienced by the old way in getting a perfect sleeve, and nothing renders the dress so uncomfortable as a bad-shaped sleeve.

Every lady should remember that with a **Cornwell Self-fitting Chart and our System** in hand she has unfailing control of all modern science in dress-cutting. You should lose no time in making the necessary purchase from your home agent, but should there be no agent near, **you can then apply at once** to our office at **Chicago**, where full particulars regarding prices and agencies will be given. **An active lady agent wanted in every locality.**

See our premium list and special offer to purchasers, a chart given free, etc., on other pages. We want the name and address of every chart purchaser. Send to us for private terms where there is no active agent at work.

N. B.—see our Purchasing Agency on first page, our **Premiums**, and a few of the many tens of thousands letters we have received of like import in back of book. Write us.

TO OUR AGENTS AND THEIR SCHOLARS.

To insure perfect success in the use of the **Cornwell System** of Dress-cutting it is absolutely necessary that you acquire a practical knowledge of its easy workings from the Agent or Canvasser at the time of the purchase. Bear in mind the agent is the only one fully qualified to give you personal instruction and to demonstrate to your perfect satisfaction the great merits of this **Self-fitting System of Dress-cutting**.

There is nothing difficult about this that the agent cannot readily impart to the newest beginner; all that is required is that earnest attention be given to the figures, pencil lines and personal instruction of the teacher to make you a good and competent dressmaker in a few hours.

This **Self-fitting System** of Dress-cutting fully meets the wants of ladies who desire the Science of Dressmaking without the much dreaded apprenticeship.

Ladies with Sewing Machines find this **System** invaluable. Of the 100,000 in private families, not one would be parted with for ten times its cost. Examine it, test it and you will prize it above your sewing machine,

No lady should miss this golden opportunity to obtain from the agent the only **First Premium System of Dress-cutting** in the world.

The agent will surprise you with its wonderful workings. Do not fail while the agent is here to make your purchase, and to get for yourself our five measurements—the Shoulder, Bust, Waist and Taper measures, and hereby see the wonderful improvements in the new art of dressmaking. It is worth more than \$100.00 to you.

Purchasers need have no fears but whatever is claimed for this simple and perfect **System** of dress-cutting they can easily and quickly comprehend. More than half a million have been instructed in the use of this **Self-fitting System** successfully. On account of its great merit it has become the only reliable system of dress-cutting throughout the civilized world.

This fact was fully demonstrated at the great Centennial Exhibition, when **Cornwell's Improved Self-fitting System** attracted great attention in competition with all the charts and systems of the world, and won the unqualified admiration of the most experienced and practical judges who witnessed its marvelous workings. For its great superiority it secured over all competitors the highest possible award that could be given by the Commissioners. The decision of this august body of the world's judges is unhesitatingly ratified by more than a **quarter of a million** of happy possessors of this system of dress-cutting.

Purchasers will please take notice that after this season the retail price of the **Cornwell Self-fitting System** will be advanced.

Parties who receive this book from the agent to read and do not wish to purchase will confer a favor by handing it to some one who may.

In order to arouse the interest of the person to whom you would sell, and gain a patient hearing, it is suggested that you cut and baste a lining for the party on the spot.

You will many times be repulsed in attempting to gain a hearing from **superstitious** dressmakers; they having long ago adopted some one of the many superannuated systems now no longer entitled to shelf room. A deep-rooted though unreasonable prejudice will often meet you with the remark, "I find no trouble in fitting; I never have a misfit," etc., and then you are triumphantly referred to their success in the old-fashioned method of fitting to the form, or to some favorite model which in their opinion is perfect. These statements you can and should be prepared to meet, respectfully of course, pointing out to them that all other charts are limited to a **SINGLE RULE for fitting that most difficult part of the form, the shoulder**. Now, differing as the shoulder does in almost every person, in one being square, another round, another

high, another low, another hollow and another sloping, it can be made self-evident that **no one arbitrary rule** is competent to produce a fit in all these dissimilar cases. Here is then the **great superiority of this Chart**. By the use of some one of these measurements, all **cut and try guess-work is done away with**, and an absolutely **perfect fit is sure to follow**. It will be easy, furthermore, to show them the *impossibility* of cutting and making up a dress complete with neck-band and sleeves all on to fit elegantly their own form by pinning on or according to their old way without even once trying on, at the same time calling attention to this **Self-Fitting Chart**, how easy this hitherto impossible proceeding is now rendered practical and **certain** by the use of this **system only**.

In order more fully to illustrate the *defects* of all other charts, models, and systems, from Mme. Simpkins' down to old Granny Perfection's model, you will request the owner of any such chart to draw out on paper, according to its rules, a pattern of her own waist, while you draw one of the same person by this **Self-Fitting Chart** directly over it on the same paper, matching them at the lowest point of the neck to begin with. You will at once see that both cannot fit the same form, but when the lining cut by this **Self-Fitting Chart** is tried on, the controversy ends; **the comparison of this system with all others decides the question at once and forever**.

Agents for the sale of this **Self-Fitting Chart** will be at particular pains to explain the workings of the **Chart** to all sewing machine dealers, pointing out its advantages and showing wherein it excels all its competitors, calling attention to the inducements offered them by combining its circulation with the sale of sewing machines.

No Chart must be left on trial. Never attempt to sell until you have thoroughly explained the principles of the **Chart** in detail. After once showing all the merits of this **Self-Fitting Chart**, marking out all the **different shoulder seams**, etc., to a customer, *pay* should be demanded, when full and complete instruction thereto will be given or the money refunded.

When convenient, the party investigating the merits of this **Self-Fitting Chart** should produce material from which to cut a waist lining so that its **superiority** to the old **system** of **cutting** and **trying on** may be clearly demonstrated. **Never try on over the dress**.

HOW TO PROCURE CORNWELL'S IMPROVED CHART AND SLEEVE SYSTEM.

We desire to secure an active, intelligent lady in every town to represent our Chart and Sleeve System. It will be readily understood that a business like ours, extending to nearly every town in the United States and Canada, and to many foreign countries, must be transacted principally through local agents. We want but one agent in a place; our plan is to appoint one for every five or ten thousand inhabitants, or double that number, if the agent is energetic enough to control the whole trade, which is always desirable, even when three times as much territory is given. It is expected that the agent will possess a practical knowledge of the Chart and give thorough instruction in its use when making sales. Agents tell us our Systems not only sell themselves but actually create a demand which multiplies in ten-fold ratio, inasmuch as for every one introduced into a neighborhood sales are secured for at least a dozen more, and thus a sure income is assured to the agent with very little effort. In selling this Chart you will find that one customer makes two, two make four, four eight, etc., when its popularity soon becomes universal throughout the neighborhood. There is no article so suitable for a lady to sell as the **Cornwell's System of Cutting**, and

nothing that yields so much profit to the seller, and such gratification to the buyer. Agents never fail to sell our system. A few sold each month at the regular price will yield a handsome profit besides the Commission which we offer the agent for appointing **Sub-Agents** for other localities. We have thousands of inexperienced canvassers who are only **Sub-Agents** making \$10 to \$20 per week profit, appointed by the regular agent, whose name should appear in the blank space on this page,

_____ *Agent.*

_____ *et.*

The regular agents reaping the greatest commission have taken the most pains in selecting for **Sub-Agents** such women as have had experience in teaching, or selling machines, books or canvassing then drilling them thoroughly in the good work. Parties desiring **Sub-Agencies** must first apply to the regular agent nearest them, who will most likely have the power to appoint **Sub-Agents** for the very location most desired; but should no agent be known and no name appear in the blank you may presume that no agent has been appointed for your locality, when you are requested to write to our principal office in Chicago, at once setting forth the fact that no agent is engaged in such neighborhood, and receive all desired information by return mail. We desire the names and addresses of all our agents and Chart purchasers, and their occupation, whether milliner, dressmaker, teacher, farmer's wife or daughter on our record-book, that we may protect all concerned in their respective rights, and be enabled to fairly award the prizes described elsewhere. This request is absolutely necessary, and should be strictly complied with. It is further expected that dressmakers having apprentices will supply them liberally with our **System of Cutting.**

OUR PREMIUMS.

As a further inducement to our agents to use their best efforts to extend the demand for our System of Cutting, and as a guarantee of our appreciation of their enterprise in our behalf, we offer the following prizes to be contested for:

First Prize:—One "NEW HOME" sewing machine with drop leaf, cover, drawers, and all the latest attachments, the handsomest and best sewing machine in the market. The regular price of this machine is \$50. This Valuable PRIZE will be presented to the agent disposing of the greatest number of Systems during the year, and awarded on the following New Year's day.

First Prize awarded Jan. 1st, 1885, to Mrs. A. M. Clement, Fennels, Canada.

Second Prize:—Two dozen Charts and Sleeve Systems will be awarded on the same day to the agent disposing of the *next largest* number during the year.

Awarded Jan. 1st, 1885, to Lizzie Rieth, Port Washington, Wis., Mrs. M. J. Gardner, Rochester, N. Y.

Third Prize:—One dozen Charts and Sleeve Systems will be awarded in like manner to the agent disposing of the *third largest* number during the year.

Awarded Jan. 1st, 1885, to Mrs. E. M. Brewer, 895 Niagara St., Buffalo; Cornelia Peavy, Sykes Mills, Ala.

OUR REGULAR YEARLY PRIZE TO PURCHASERS.

The name of every purchaser of a Cornwell Chart during the year should be sent to us to be recorded in our list of patrons, who will participate in the grand drawing to be held on New Year's day of each year. The drawing will be for a NEW HOME sewing machine, same as the above. *This is a chance for you to get a fine sewing machine free of charge*, and every purchaser should take advantage of this offer and send in her name to be entered on our prize list. All the prizes will be published as soon as awarded.

This prize was awarded, by impartial ballot, Jan. 1st 1885, to Mrs. A. J. Diamond, Whitesboro, Tex.

This is to certify that I have this day shipped Two First Class Sixty-Five Dollar Hartford Sewing Machine (with every attachment complete)—one to Mrs. A. M. Clement of Fennels, Canada, the other to Mrs. A. J. Diamond, Whitesboro, Texas, said ladies having been awarded such prizes for last year. WM. M. DURELL,

(Signed.) Agt. Hartford Sewing Machine Co.,
Michigan Ave. and Jackson Sts., Chicago.

Dated Jan. 2d, 1885.

SPECIAL PREMIUMS

17

TO BE GIVEN TO EVERY LADY

Who will send us, within the year, orders for a certain number of our Improved Self-fitting Charts with Sleeve Systems as follows:

\$100 IN GOLD

For 500 Charts with Sleeve Systems.

A Ladies' Fine Gold Watch, - - Value \$50,

For 150 Charts with Sleeve Systems.

A First-Class Sewing Machine, - Value \$35,

For 100 Charts with Sleeve Systems.

The Material For a Silk Dress, - Value \$25,

For 75 Charts with Sleeve Systems.

A Fine Gold Necklace and Locket, Value \$15,

For 50 Charts with Sleeve Systems.

The Material for a Cashmere Dress, Value \$10,

For 25 Charts with Sleeve Systems.

Any lady entitled to either of these premiums can have the value of the premium exchanged for Charts or Sleeve Systems at our regular rates if preferred.

It is not absolutely necessary that, orders entitling the purchaser to a premium should be sent us at one time, but may be ordered from time to time within the year. When orders calling for either of the premiums are received by us it will be sent by request immediately.

Any lady sending us \$8.00 or more will receive the value in Charts and Sleeve Systems at our Wholesale Prices, free by mail, providing there is no active agent in her locality.

We send our Private Terms to those desiring agencies where none exists, showing how to make more money than by any other way possible. Write us at once.

Local agents and lady canvassers wanted everywhere.

Charts and Sleeve Systems sent by mail on receipt of price, with books, circulars and show card, and warrant them to arrive safe.

Charts and Sleeve Systems may be sent by express collect on delivery, at your expense, if so ordered.

Send money by P. O. order, check or registered letter. Five dollars or less may be sent in our return envelope at our risk. Will receive P. O. stamps for change.

On receipt of postage we will send Chart and Instruction Books free, and to insure you a large package of printed matter send us twenty cents to pay postage, if you feel able. Write us. Address **WILLETT CORNWELL,**
1229 Wabash Ave., CHICAGO.

First Issue of CHART with GREAT IMPROVEMENT Just Out.

Lady Agents Wanted

EVERYWHERE,

FOR CORNWELL'S SYSTEM OF DRESS-CUTTING.

One Chart & Sleeve System

GIVEN FREE!

Any lady who will use her influence to induce some active lady to send us an order for not less than **FOUR CHARTS** and **FOUR SLEEVE SYSTEMS**, will receive, **FREE OF CHARGE**, for her trouble, **ONE CHART AND SLEEVE SYSTEM**, as soon as we receive such order; besides, both parties will be classed in the drawing of the **SEWING MACHINE** first of the year.

BE PARTICULAR TO NOTICE, The very important change we have just made in our chart. By reducing the darts, and making provisions for an underarm dart, we fully meet the wants of the present style of fitting.

Address,

WILLETT CORNWELL,

1229 Wabash Ave., CHICAGO.

TO DRESSMAKERS.

HUMBLE, patient dressmaker, please peruse this pamphlet fairly and impartially, and **resolve** not to frown upon or disparage the efforts of the advocate or agent who offers to shed **new light** upon your pathway by simplifying your labors and ameliorating your perplexities, but give your thoughtful attention to the newly-discovered merits embodied in this **Improved Self-fitting Chart**, and avoid the repetition of that old story so often told to agents—"I have no trouble in fitting; my pattern or model gives perfect satisfaction; I am satisfied," etc., remembering, dear Madam, that all improvement is entitled to, and must sooner or later obtain recognition. **Your pinning on cut-and-try-system is fast becoming unpopular and superannuated.** You are now working in the same old way in which your great grandmother fitted dresses, simply because hitherto you have found no improvement worthy the name, or any other method which would stand the test of practical use. There has certainly been but little progress in this art for the last eighteen centuries. **DRESSMAKERS FIT ON NOW PRECISELY AS THEY DID HUNDREDS OF YEARS AGO.** Therefore for your own benefit embrace the first opportunity of examining this **new system** and remember the old precept, **"Prove all things; hold fast to that which is good."**

By using this **Self-fitting Chart**, no dress-making business need be circumscribed. The exact measurements can at once be taken of all customers, no matter how numerous. Coming as they usually do, in the middle or busier part of the day, while the earlier and later hours may be employed in cutting the garments from the measurements previously taken, **obtaining as perfect a fit as though the customer herself were present.** "This is all easily said," you remark, with a smile of incredulity, but when you have become acquainted with the principles of this **Self-fitting Chart**, their accuracy and simplicity, you will cheerfully certify, with hundreds of thousands of others, to their practicability and the great saving of time and labor effected by its use.

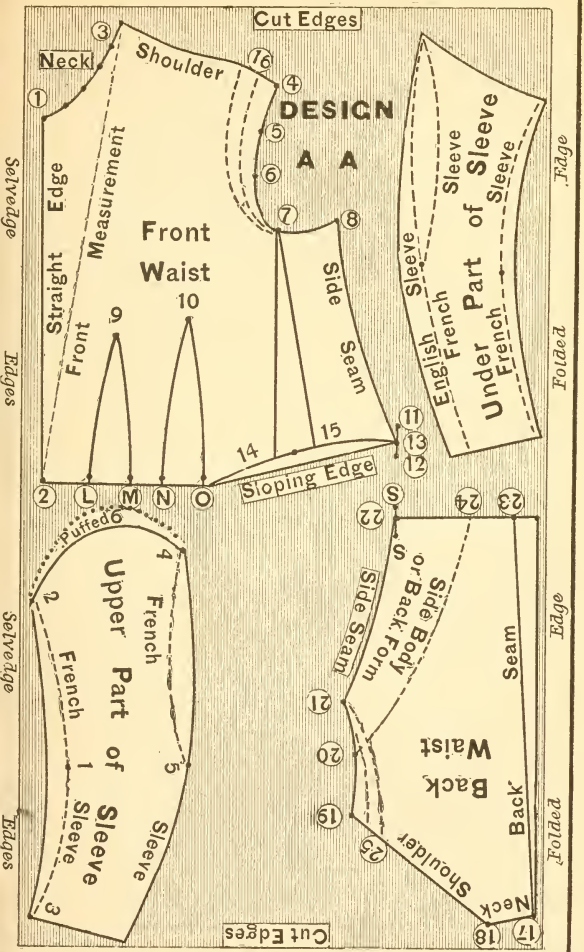
Who does not remember, upon its first introduction, the hue and cry about the Sewing Machine, that poor woman would have nothing to do; that the sewing woman's occupation was gone; that the bread was taken from the mouths of suffering, struggling, working females to add to the accumulations of the already rich and independent manu-

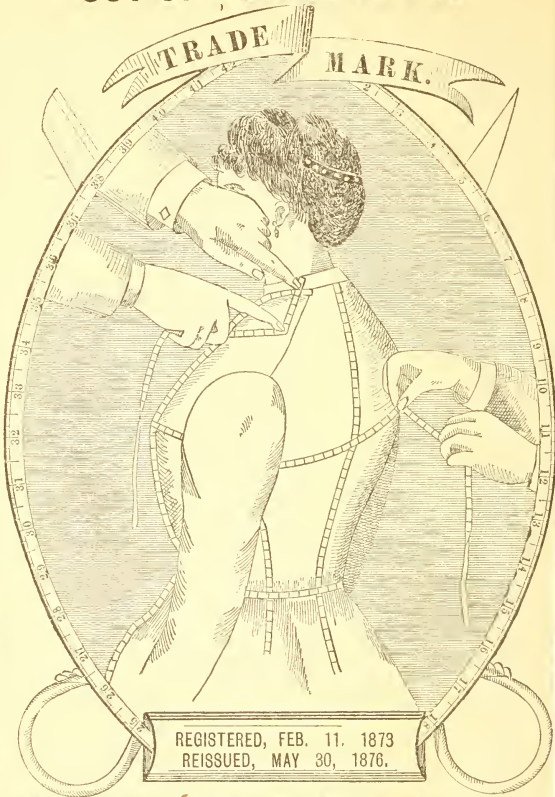
facturers? Time has proven the groundlessness of this fear, and now, thousands of women look upon this machine as the main stay of their existence, their sure support and provider. **The Cromwell Self-fitting Chart** fulfills the same beneficent mission, and now these two great inventions must be regarded as the wings which will waft the sewing woman from the gloom and despondency of an over-wrought and under-paid laborer to the dignity and independence always the due of patient, persistent industry. Therefore, dear dressmaker, for humanity's sake as well as for your own, **advocate the utility of this Self-fitting Chart. Sanction it by daily using it,** and do not hesitate to certify to its **great worth** and the material aid you derive from its use. Ridicule cannot harm nor prejudice arrest the onward march of any genuine improvement. Accept, then, this latest benefaction, and so obtain additional credit for your work, better customers and a wider popularity. The shrewdest guessing, so much of which accompanies all **other patterns**, cannot compete with that mathematical certainty which is the basis of all our rules and measurements.

SEND FOR OUR
PRIVATE TERMS
 WHERE NO
AGENT
 IS AT WORK. .
 -1229 Wabash Ave.,
 CHICAGO.

If you do not care to
TAKE the AGENCY
 yourself, but will in-
 duce some smart Lady
 to, and write us to 1229
 Wabash Ave., Chicago,
 we will reward you
 for it.

Cornwell's Improved Directions for Cutting.





Lady Canvassers and Local Agents wanted everywhere. On receipt of \$8.00 or more, we will send the value in Charts and Sleeves at wholesale rates also our **Private Terms**, showing how to make money easily where there is no agency, by return mail We Protect Our Agents. Write me about Agency.

WILLETT CORNWELL,
1229 Wabash Avenue, - - CHICAGO.

DIRECTIONS FOR USING

Cornwell's Improved

—Self-Fitting—

SYSTEM OF DRESS CUTTING.

These directions apply to the Improved Chart with Lower Dart Scale improved and the under arm Dart provided for; also refers to the use of our new Improved Sleeve System.

Take the Measurements of the person (see cut of measurements) and set them down on paper like the following—these represent an ordinary sized person:

Bust measure	38	Length of Waist	8
Waist measure	24	Length of front Waist .	18
Taper measure the dif-		Length of back Waist .	16
ference for Darts . . .	14	Length of Sleeve	22
Hollow of Shoulder . . .	3½	Length Skirt in front .	41
Size of Neck	13½	Length Skirt at back .	42

For *long or Short Shoulders* for dress see 7th direction.

1st. Bust Measure.—Stand at the back of the person, pass the tape measure under the arms and bring around loosely over the largest part of the bust—well supplied with artificial fullness if any is intended to be worn.

2d. Waist Measure.—Take snug around the waist about 8 inches below the arms.

3d. Length of Waist.—Measure with tape line on the side seam, from the arm hole downward.

4th. Shoulder Measure to Hollow.—Place tape at the top of the band at the side of neck and measure down on top of shoulder to the hollow—this hollow is easily found by slightly raising the arm

5th. Taper Measure for Darts.—Subtract waist measure from bust measure and the difference will be the taper number to be used in Dart Scale "M."

6th. Extra Waist Measures.—Find the length from the shoulder seam at the side of neck down in front to the waist line, and the length from the neck band down the back to the waist line. This **PROVES** the length of the waist.

[*Directions Continued.*]

7th. To Regulate the Length of Shoulder of Dress, take measure from bottom of neck band down the shoulder seam the distance required.

8th. Sleeve Measure.—Take from the back of arm hole down over the elbow to the wrist with arm bent. For full and complete directions see Sleeve System.

9th. Neck Measure.—Take the measure around the neck at the height you wish dress when completed. Trim out to suit the size and style desired.

CUT THE FRONT WAIST FIRST.

10th. For a Plain Waist with sleeves use a yard and one-quarter of good lining, which is usually 40 inches wide; keep folded and pin together and lay it with selvage edge next to you on the table. For a plain waist and sleeves of ordinary size and how drafted on the lining, with every line and dot numbered or lettered and referred to in these directions; you will see design A A.

11th. Place Front Chart with long straight edge one and a quarter inches from the selvage edge and high up on the lining and line along straight edge. See 1 to 2. N. B.—Be careful to hold chart in place.

12th. Neck Scale A, in which find your Bust Measure, dotting through all the holes in the line in upward curve. See 1 to 3. Keep chart in place.

13th. Arm-Hole.—Dot through the holes at your Bust Measure in scales B C D E F. See 4, 5, 6, 7, 8. Keep chart in place.

14th. Top of Darts.—Bear in mind ALWAYS to dot through the holes at the right and left of your Bust Measure in scale G at the time you do the neck and arm-hole, but you must not dot the bottom of darts then. See 9 and 10. Keep chart in place. **The Top of Darts** often appear too slanting when drafting **Waists** with small tapers; in such cases move the top of Darts forward to suit taste.

15th. For the Side Seam.—Place the finger of your left hand at your Waist Measure in scale H then follow out to the right in a straight line to your Bust Measure in scale I, dotting through the holes directly above and below your Bust Measure. See 11 and 12.

[Directions Continued.]

16th. Remove the Chart.—Draw a straight line on lining between two dots last made extending the line above and below dots for extreme sizes. *Draw* curved line from dot to dot for neck. See 1 to 3. *Draw* curve from dot to dot for arm-hole. See 4, 5, 6, 7, 8.

17th. Length of Waist and Side-Seam.—Place point J of Back Chart at the lowest dot in Arm-Hole, with scale edge to intersect the straight line. See 11 to 12—at the figure indicating the length of your Waist and line along scale edge. See 8 to 13.

18th. To Prove the Length of Front Waist measure from the highest point of neck down the lining the length of Front required, and make dot for waist line. See 3 to 2. Read 6th direction.

19th. Bottom of Waist.—Replace Front Chart Square on the lining with straight edge at the line as at first, then move Chart Square up or down until Sloping Edge K is at the intersecting point at bottom of side seam—see 13—with right hand hold Chart down at this point (while you move left side up or down to conform to a measurement made down the front waist, if one has been taken)—see 2—then draw line along edge from intersecting point to left edge. Keep chart in place.

20th. Bottom of Darts.—With chart kept in same position, dot through hole L, also through three holes in scale M, directly under your taper number—See L, M, N, O. For Taper Number, read 5th direction.

21st. Top of Shoulder—Place at the upper neck dot on lining that point at the edge of chart in Scale N, which has your shoulder measure, having upper edge of chart at upper dot of arm-hole and line along edge. See 3 to 4.

22d. The Darts How to Mark Out.—Place point J Back Chart at upper left dot on lining with Dart Scale edge at lower left dot and line along Scale edge. See 9 to L. **Turn-Over Chart,** keeping point J at same dot with Scale Edge at the next dot to right and line down. See 9 to M. **To Complete the Back Dart** use the three remaining dots on lining. See 10 N. O. by the same method as before.

23d. To Prepare the Waist Line for an Under Arm Dart place point J of Back Chart wrong side up at the crossing of the back line of back dart and the

[Directions Continued]

waist line, with Dart Scale edge at the intersecting point of side seam and draw curved line. See 0 to 13. **N. B.** An Under-Arm Dart about one-and-three-fourth inches wide is required in all close-fitting garments. The chart is so arranged that an Under-Arm dart of this width is thus made necessary.

24th. To Draft Under Arm Dart.—Begin at the left lower dot in arm-hole (see 7) and line a straight edged Dart to curved waist line, and about $1\frac{3}{4}$ inches wide at waist line—see 14, 15—and half way between Back Dart and side seam. See 0 to 13.

25th. To Shorten the Shoulder and Shape the Arm-Hole.—Place point E of the SLEEVE SYSTEM on the shoulder seam at the required length for shoulder of dress, with upper end of sleeve at the left lower dot of Arm-hole, and draw line along edge. See 7 to 16. How to get this measurement see 7th direction.

TO CUT THE BACK WAIST.

26th. Use the remainder of the lining still pinned together. Place the Back Chart high up on the lining with Scale Edge along the **Folded Edge** of lining.

27th. Back of Neck—Dot through both holes in "Neck Scale 0." See 17, 18.

28th. Arm-Hole.—Dot holes at your bust measure in Scales P, Q, R. See 19, 20, 21.

29th. Waist Measure, Scale S.—Dot the holes directly above and below your waist measure in this scale. See S., S.

30th. Remove Back Chart.—Draw a line on lining for back of neck. See 17, 18. Draw a curved line on lining for arm-hole. See 19, 20, 21. Draw straight line on lining between two dots. See S. to S. Extending line above and below for extreme sizes.

31st. Length of Waist and Side Seam.—Place point J at the lowest dot in arm-hole, with scale edge to intersect the straight line (see S. to S.) at the figure indicating length of your waist, and line along scale edge. See 21 to 22.

32d. To Prove the Length of Back Waist.—Measure down from back of neck on lining and make dot for waist line the length of back required. See 17 to 23. Read 6th direction.

[Directions Continued.]

33d. Bottom of Waist.—Draw straight line with edge of Back Chart square to the left from point of intersection at 22 to folded edge of lining, striking the measurement made down the center of back, if one has been taken. See 22, 23.

34th. Shoulder Seam.—Place point T of Back Chart at neck dot, with shoulder edge at upper dot of armhole on lining and line. See 18, 19.

35th. For Seam in the Back.—One-quarter of an inch wide at the top and three-fourths of an inch wide at the waist line. Draw line along straight edge of Chart. See 17 to 23.

36th. For Back Form.—Turn over Back Chart and place hole U at middle dot in arm-hole, with Back Form edge at the waist line, the required width to make side body to suit the style, and draw line. See 20 to 24. To make a straighter curve move chart up higher.

37th. To Shorten the Shoulder and Shape Back of Arm-Hole.—Place point E of the **Sleeve System** at a point on the shoulder seam, See 25, to correspond with the front shoulder seam, with upper part of sleeve at lowest dot in arm-hole and line along edge. See 21 to 25. N. B.—The back shoulder should be one-half inch the longest. In sewing together the shoulder seams **STRETCH** the front in the hollow to match the back.

SPECIAL SLEEVE NOTICE.

38th. For Cutting a Perfect Fitting Sleeve.—See full and complete directions on the Sleeve System itself, and for design see black lines of both upper and under sleeve.

39th. For a Tight-Fitting French Sleeve.—See long dotted lines on design. First mark out on lining with Sleeve System in the usual way the size of sleeve required. Then make first dot at bend of arm about $\frac{1}{2}$ inc on the lining from edge. Place point A of System at 2 with inner edge at one and line 2 to 1; then swing System down enough to line 1 to 3. Turn over System and place point A at 4 with inner edge at point of elbow, and line 4 to 5. For under part of sleeve use the same method as before, and make sleeve smaller at the wrist to suit taste.

For Sleeve gathered high at top add about one inch. See round dotted line over 6.

HOW TO USE THE CHART.

THE SLEEVE SYSTEM.—To Measure,— Cut the Cloth, and Make the Garment, Etc.,

Other than by the following Directions, you will see "**Directions for Using.**" Aside from these directions the learner will be referred to the printed directions on the Chart and Sleeve System themselves.

BEAR IN MIND that **Correct Measurements** of the person to be fitted are as necessary in the use of this **Chart and Sleeve System** as to a tailor in cutting a coat, therefore **be careful** and put down on paper the measurements taken.

BUST MEASURE.—In taking this you will stand behind the person and bring the tape around over the largest portion of the bust, and across the shoulder blades, at the back. (See cut of measurements.) Avoid drawing the tape too tight. When the bust measure comes between two sizes, take the largest one. **Never measure over a loose dress.** Should you find, in making up the dress, that the bust is either too large or too small, it is evidence that this measurement was wrongly taken.

SHOULDER MEASURE.—Stand at side of person, and if there seems to be any difference in the shoulders, measure both of them. (See cut of measurements.) This hollow is located just above the upper edge of the clavical bone, where it joins the shoulder blade and collar bone. Its location is regular and its distance from the side of the neck corresponds exactly to the slope of the shoulder, and varies in length in different forms from $1\frac{1}{2}$ to $5\frac{1}{2}$ inches. The general size of the person governs little, if any, the distance this hollow is from the neck. With high and square shoulders this clavical bone or cap of the shoulder lies high and flatter on top, and nearer the neck, making a shorter measurement. With sloping shoulders this bone turns over more, making, of course, a longer measurement.

THE TAPER MEASUREMENTS, or Darts, are obtained by subtraction.

For illustration—If a given Bust measures **38** inches and the waist **24** inches, the difference, **14** inches, will be the exact amount which must be taken up in the dart.

[Directions Continued]

NECK SIZE.—The trimming down necessary to conform to this measure should always be done in front. Should you find, on trying on the dress, any wrinkles about the side or front of the neck, make up your mind that you have failed to *trim out* enough cloth in front.

BACK FORMS.—In **trimming the cloth** to conform to the back waist lining, after being basted together, allow three-fourths of an inch more of the outside at the side seams, half way up the arm-hole, and at the bottom of the waist. This will provide for the welt in the forms on the back. Baste through the cloth and lining on the line marked out for the back forms, then fold up enough of the outside to form the welt, and baste through both the second time, after which stitch through the whole with a sewing machine.

MARK THE LINES of the garment **through** both thicknesses of cloth with a marking wheel, or crease them between the thumb and finger.

N. B.—In **cutting the cloth** allow $1\frac{1}{2}$ inches for turning under in front. Allow three-fourths of an inch for all seams except in the neck and arm-hole. Sew up the seams on the lines.

In sewing up the shoulder seams stretch the front cloth in the hollow to match the back. Turn the shoulder and side seams forward and the darts back.

SKIRTS.—In seaming up a skirt, **always** match a biased and a straight edge together.

GARIBALDIS.—For **cutting this garment**, add two sizes to the bust measure in "Row F" in the front Chart and "R" in the back Chart. Gather into the front waist what would otherwise be used in darts, adding to the bottom of the back **one-third** more cloth than for a tight waist, the extra width to be used for gathering in.

This rule of adding two sizes to the bust measure in "Rows F and R" holds good in cutting loose waists, sacks, coats, night-dresses and wrappers.

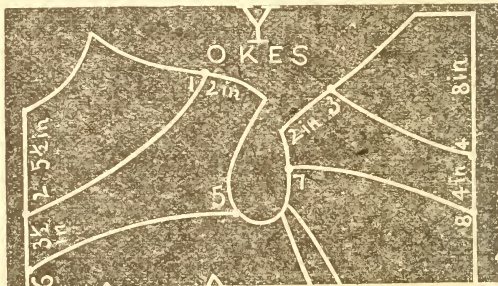
IN CUTTING VELVET GARMENTS, unlike other goods, the **nap** must run up.

Velvet and other Wadded Cloaks require an addition of two sizes to the ordinary bust measure in "Row F," on the front Chart, and five sizes in "Row R," on the back Chart. Keep all other measures without change. Make the desired curve in arm-hole.

OPEN BACKS.—To cut the front, let the long straight edge of the front chart project one-half inch over the left selvedge of the cloth, then proceed in the usual way. To cut the back, place the straight edge of the back chart on the cloth, one inch back from the selvedge, drawing a line there on the cloth (this is for turning under), then move another inch further from the edge, drawing another line (this is for lapping), after which proceed in the usual way.

LOW-NECKED DRESSES.—First draft out on paper a plain waist from which the patterns may be cut. Place hole "U" of back Chart on the front shoulder-seam at "1," two inches up from the point of the shoulder, and mark along the edge to "2," a point five and one-half inches below the neck. Then place hole "U" on the back shoulder-seam at 3, two inches up from the point of shoulder, and mark along the edge to 4, eight inches below the neck.

YOKES.—As the following are loose fitting, allowance must be made (see "Garibaldi's") in cutting the pattern for a chemise or a night-dress yoke. For the upper line of these yokes use the line of the "Low-neck Dress," as directed above. To get the lower line, invert the back Chart and place hole "U" at the fourth dot in the front arm hole at 5, and mark along the edge to 6, a point nine inches down from the neck. Then place hole "U" at middle dot in back arm hole at 7, and mark along edge to 8, a point 12 inches below neck. The figures in above directions refer to following cut.



Shoulder Seams.—Special care should be taken that the front waist, which must be three-eighths of an inch shorter at the shoulder seam than the back, be

stretched in the hollow sufficiently to match the back. N. B.—The sewing should always be exactly on the lines.

BACK DART.—**Be particular to stretch** the back line of the back dart when sewing it together.

UNDER ARM SEAM.—**Be particular to draft** the Front cloth one quarter of an inch shorter than the back, and in sewing together this seam **stretch the front** to match the back.

FIT OUTSIDE WAISTS TO TIGHT LININGS.—Sew up the darts in the lining. Begin to baste the outside cloth on at the neck, and continue along the shoulder arm-hole and side seam. Then gather in the fullness of the bottom between the back dart and the front edge. Take pains to shorten the cloth one inch in front, running back and out as far as gathered. Baste together both edges even at the bottom. **In basting on the outside to the back,** begin at the neck and continue along the shoulder and down the side seam. Gather in the fullness of the bottom, (which, like the bottom of a Garibaldi, is one-third wider than a plain waist,) except $1\frac{1}{2}$ inches at each edge. Baste together both edges even at the bottom.

LAP IN FRONT.—**The lap down the front** of the waist on the buttonhole side must be **turned under.** The other side must have a plait **quarter** of an inch wide turned toward the front, and **one and one-half** inches back from the edge. This is a stay to sew the buttons on.

SEWING ON DRESS BRAID.—**First shrink the braid,** then hold it loosely when sewing it on.

STRETCH SKIRT OF BASQUE.—**That portion which passes** over the hip should be **stretched** to conform to the swell of the hip.

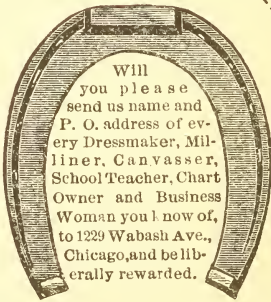
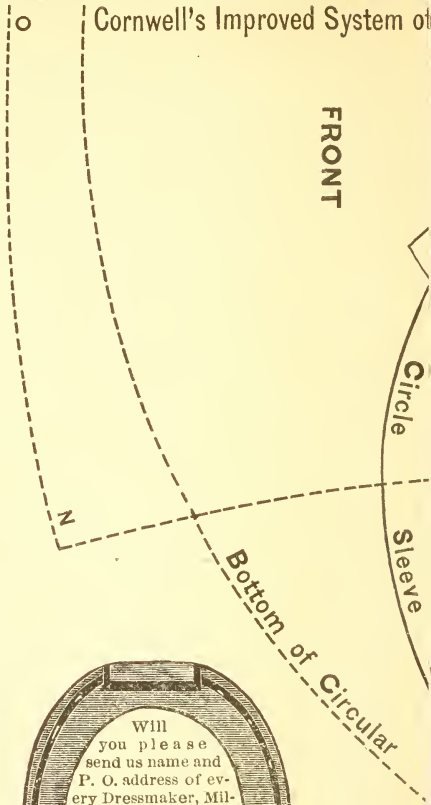
HOOK AND EYE PIECES.—Should be made about three inches long, sewing them in with the front dart, one inch above the bottom of the waist.

WHALEBONES.—Should be one inch shorter at the top than the darts.

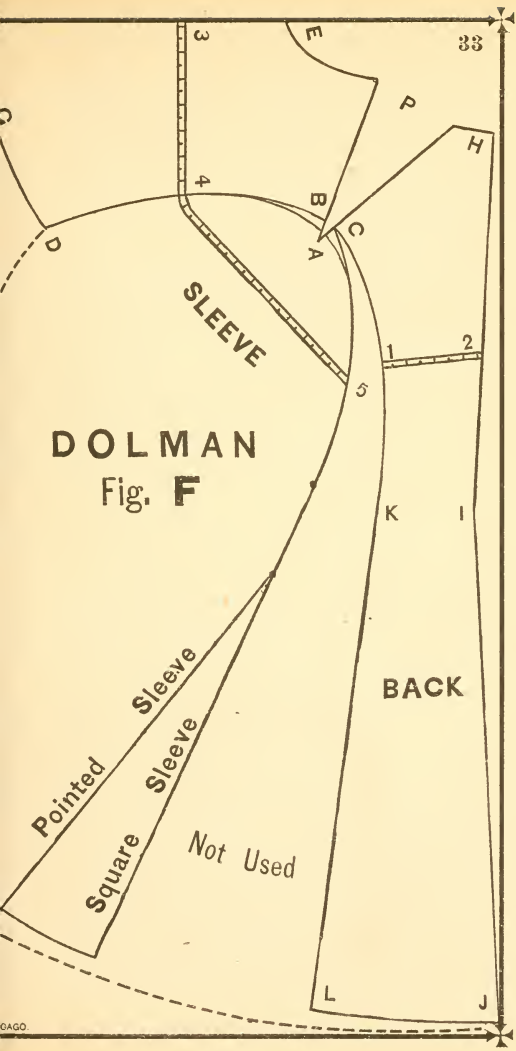
CLIP THE SEAMS.—In tight-fitting Basques and Corsage Waists, clip the seams at the bottom of the waist to allow the skirt to spring out over the hips and prevent drawing.

TO FINISH THE INSIDE OF THE WAIST.—Artistically turn the side and shoulder seams forward and the darts back, trim even the raw edges of all the seams, then turn them in and stitch them through with a sewing machine.

FRONT



Will
 you please
 send us name and
 P. O. address of ev-
 ery Dressmaker, Mil-
 liner, Canvasser,
 School Teacher, Chart
 Owner and Business
 Woman you know of,
 to 1229 Wabash Ave.,
 Chicago, and be lib-
 erally rewarded.



To Cut a Dolman Paper Pattern.

REFERENCE WILL BE TO DESIGN F.

Take the measurements of the person and set them down on paper as follows:

1st. Bust measure.

2d. Shoulder measure.

3d. A measurement from a point on shoulder seam about one inch from sleeve down in front to bend in arm with hand held in position just below waist line in front.

4th. A measurement from neck band at throat down to wrist with hand held in position just below waist line.

5th. A measurement from the bend in arm held in position, toward the wrist the length of sleeve required.

6th. A measurement from the back of neck down to waist line, thence down full length of dolman required.

7th. A measurement from the center of back at waist line, the width across back piece required; usually about four inches.

8th. A measurement from the center of bust in front straight around over fullest part of arm to center of back with arm in position in front. This measurement determines the size of sleeve.

9th. A measurement around the body over fullest part of hips, to which add four inches for fullness.

10th. For the width of bottom of dolman add fourteen inches more to hip measure. N. B. Use one-half this measurement for pattern.

Prepare to Draft the Pattern.

Take two sheets of heavy paper, say 24 by 36 inches, paste them together, making large sheet 36 by 48 square. Place the front chart on left edge of shortest side of paper and about six inches down from corner, hold chart in position, then place back chart wrong side up partially over it with straight edge along upper edge of paper at right angles with front chart. Now move them into position so that with a pencil you can mark through both charts together and at same bust measure in scale "P" on back chart and scale "B" in front chart. Be careful to keep the straight edges of chart at edges of paper; with charts held in position, dot out and draft necks in both front and back in usual way, keeping back chart wrong side up; remove chart.

[*Dolman Continued.*]

As you proceed to draft make dots and letters a pattern to correspond to design F, dot "A" being first dot made in pattern.

Make dots "B" and "C" about one inch up the shoulder lines from dot A.

To Draft the 3rd. Measurement—Measure down from B to D length required, placing dot D same distance from left edge of paper as dot B.

Place back chart (wrong side up) with hole U at dot B, and line along curved edge to dot D.

To Draft the 4th. Measurement—Make dot E at throat, then measure down edge of paper to dot F, length required.

To Draft the 5th. Measurement—Place hole U back chart at dot D with rounding edge at dot F then line from D to G, length of sleeve required. From dot G you can make different styles desired.

To Draft the 6th. Measurement—Use the long scale edge of back chart to line by and to measure length required from edge of paper at back of neck near H down to dot I, which dot must be one inch in from edge of paper; from this dot continue a straight line down sloping out to edge of paper at J the length of dolman required.

To Draft the 7th. Measurement—Make dot K at waist line square out on paper from I width of back piece required, make dot L square out on paper from dot J, making bottom about double the width as from I to K.

To Complete Drafting of Back Piece—Place hole U back chart at dot C, with rounding edge at dot K and line along edge C to K, then continue down straight line to bottom at L.

To Draft the 8th. Measurement—With tape line measure (at locations indicated on cut) the width of the back piece from one to two together with the width of the front piece three to four, adding together these measures, and continue on the full length required locate dot 5. N. B. Dot 5 should appear at the same angle and distance from dot A as 4, which position must be half way between B and D.

To Draft the Sleeve—Place back chart hole U at dot C with curved edge at dot 5, then line from dot C down full length of chart. Place straight edge of back

Dolman Continued.

chart two inches up on line last drawn, and continue straight line down along edge of chart length of sleeve required.

To Locate and Draft the 9th. Measurement—With a tape line measure the width of the back piece I to K, with this addition continue the measurement square out on the paper from dot F and make dot M at the width required. Place back chart (wrong side up) with hole U at dot D with rounding edge at dot M and line D to M.

To Draft the 10th. Measurement—With tape line measure width of back piece, L to J, with this addition continue the measurement of bottom of front O to N the width required. Now make dot N the same distance from dot M, as K is from L, draw a straight line from M to N, thence out to O, the shape of bottom required.

Line Q represents the under part of sleeve.

To form the different styles of sleeves as shown by lines in cut, use the straight and curved edges of chart to draft by.

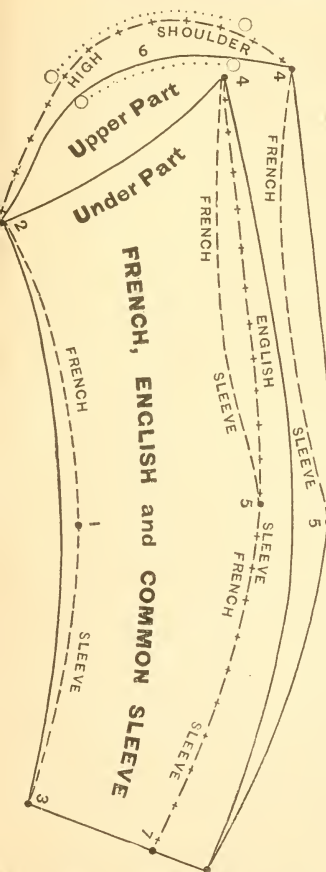
To Draft Capes and Circulars—Measure the person from the back of neck down, length required then proceed the same as for dolman to the completion of shoulder seams. Make dot P at the neck in the pattern. Hold one end of tape line with left hand on dot P, with right hold pencil on measure at the length of garment required, and swing line round from back to front for the bottom of circle.

SLEEVE.—The ordinary coat sleeve for a dress should be about **one and one-half** inches larger at the top than the arm-hole, thus providing for a slight fullness over the shoulders. The upper portion of the sleeve should be about two inches wider at the arm-hole than the under portion, gradually sloping to one inch wider at the wrist. Before putting in a sleeve with high shoulder gather the top of it with a fine stitch.

In cutting by our Sleeve System cut the cloth out on the lines, making no allowance for seams. In basting the sleeves always commence at the top. The sleeve should be so put in the arm-hole that the outside seam will come directly over the point of the elbow when bent. For a French, English or common sleeve see design.

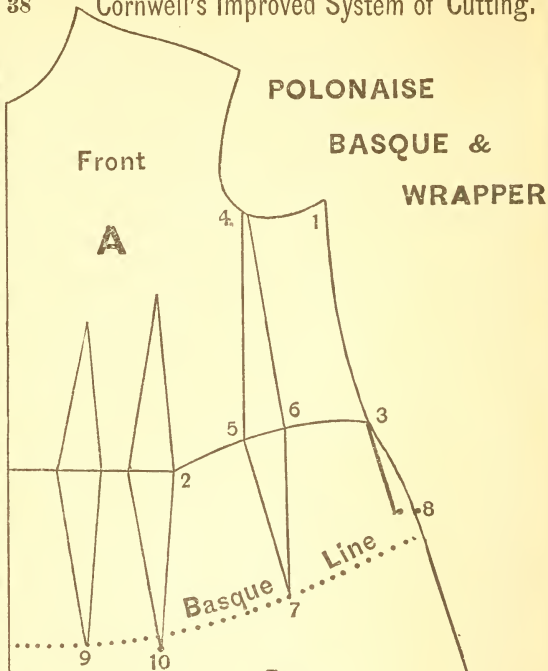
A Few of the Many Patterns Cut by 37 Cornwell's Improved Sleeve System.

For Full Directions see Sleeve System.



First mark out with Sleeve System, usual way, the size required. See black lines for Common Sleeve. To change this to a tight-fitting English sleeve, simply make under part smaller at wrist to suit taste. See star-dotted line 7 to 4. To make a tight French sleeve make dot one at bend of arm about $\frac{1}{2}$ inch on cloth from inner edge; place point A of Sleeve System at 2, with inner edge at one, and line 2 to 1; with left hand hold System down at one, and swing round and line 1 to 3. Turn over System and place point A at 4, with inner edge at point of elbow and line 4 to 5. For under part of sleeve make use of same method as before. The long dotted lines represent French Sleeve.

For sleeves with high shoulders make higher in proportion to the shortness of dress shoulder. For shape see dotted lines above 6, and where to gather, see 0 to 0.



If you do not care to
TAKE the AGENCY
yourself, but will in-
duce some smart Lady
to, and write us to 1229
Wabash Ave., Chicago,
we will reward you
for it.

DESIGNS A AND B

Represent FRONT and BACK of either

BASQUE, POLONAISE, OR WRAPPER.

For these Garments take the Bust Measure, Shoulder, Waist, length of Waist, and length of Skirt, and other necessary measures in the usual way.

TO CUT THE FRONT.

REFERENCE WILL BE TO DESIGN A.

Draft Neck, Shoulder, Arm-hole, Under Arm Dart, Top of Darts, and Length of Waist in the usual way. See main directions for plain waist.

Continue the lap line down in front the length of garment required.

To Prepare the Waist Line for the under arm dart, place point J back chart wrong side up at 2 and line along scale edge to 3.

To Draft Under Arm Dart begin at dot 4 three-fourths inch to left of lower dot in arm hole and line a straight edged dart to curved waist line and about one and three-fourths inches wide at 5 and 6 half way between 2 and 3. Continue this dart straight down six or eight inches to point 7.

To Continue Down Side Seam of Skirt place straight scale edge of chart two inches up on side seam above 3 and make dot at 6 at edge of scale, remove chart and make dot 8 one-half inch to right of last dot made and line straight 3 to 8. **To continue skirt down** from 8, place hole U back chart at 6 with rounding edge at 8 and line from 8 to point J, remove chart and continue line with same outward slope, shape and length of skirt required. If full draping is required continue down straight line from 8.

To Continue Two Front Darts—Make dots 9 and 10 from thirteen to fifteen inches directly below center of each dart and to these dots run the darts.

[*Basque, Polona'se or Wrapper Continued.*]

N. B.—It can be readily seen that our way of locating the side seam is so proportioned that it comes down over back of the hip, thereby producing an elegant fit and narrow back so much admired.

When One Dart is Required in place of two in front, make dot in center of each dart at waist line and dots between two top and two bottom points and line out one dart by these four dots, in which event the under arm dart must be located **half-way** between front dart and side seam.

A Basque Skirt is represented by dotted lines in both front and back designs.

A Princess Dress is represented in design B by cross dotted lines.

TO CUT THE BACK.

REFERENCE TO DESIGN B.

To Allow for Plaits place back chart square on cloth or paper four or six inches, on from left edge and draft neck, bust, shoulder, length of waist and side body in usual way. Draw line twelve from arm hole the length of chart EXACTLY pallel with left edge of material.

To Get Flare of Hip measure and line 13 to 14 same as length of waist, then dot 16 half way between 14 and 15, draw line from 16 up to junction of lines at 17.

The Plaits may be higher or lower by moving lines a a to suit style.

To Draft Side-body line square out to right from left edge through center of arm hole 18 to 19. To do this correctly use the full length and the square end of chart as try square and rule. Place straight edge of chart on line 12 with the bust measure in scale Q on line 18, 19. Then dot through bust measure in scales Q and R and at the waist measure in scale S. Remove chart. Care must be taken to have line 20 parallel with line 12.

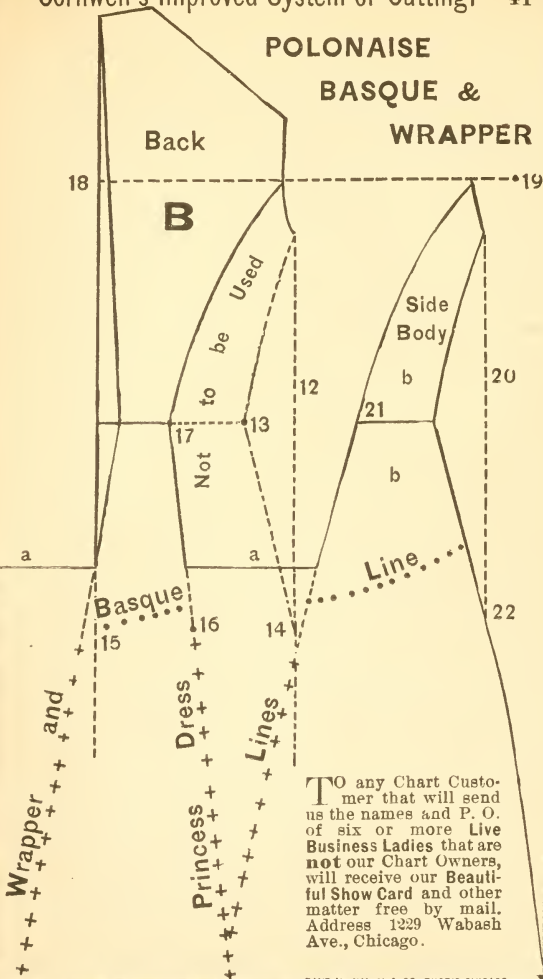
Draft out side body b b same size as one in back piece except making the necessary flare to skirt by placing straight edge of chart two inches up the line above 21 and continue same outward slope down to plait line.

Continue Skirt down the length required from 22, either straight or sloping to suit style.

POLONAISE

BASQUE &

WRAPPER

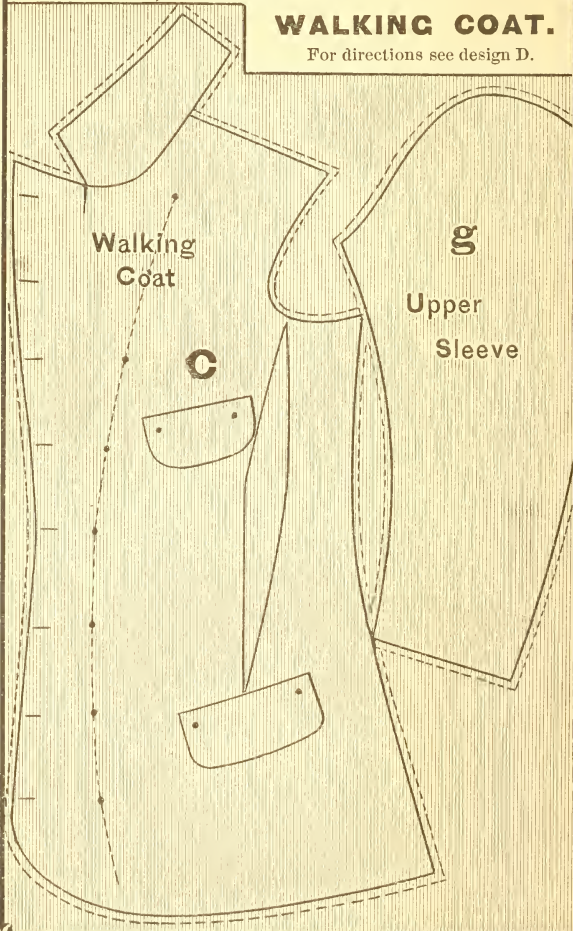


TO any Chart Customer that will send us the names and P. O. of six or more **Live Business Ladies** that are **not** our Chart Owners, will receive our **Beautiful Show Card** and other matter free by mail. Address 1229 Wabash Ave., Chicago.

Cornwell's Improved System of Cutting,
Ladies', Misses' and Children's

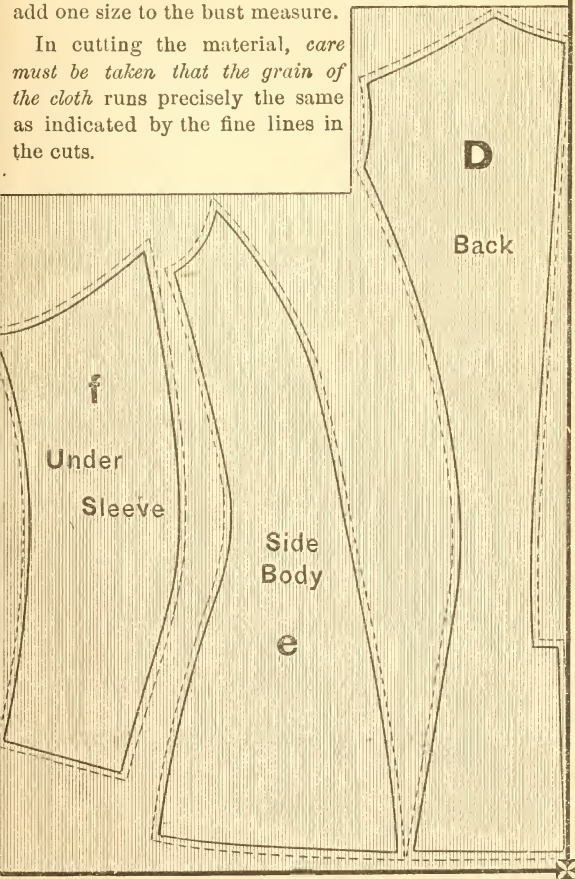
WALKING COAT.

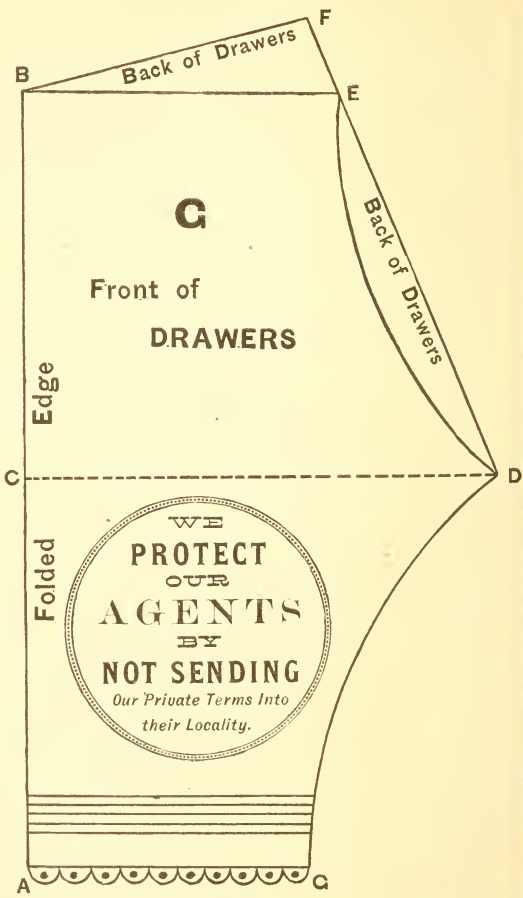
For directions see design D.



To Draft this **Walking Coat**, double-breasted, place front chart on material 3 inches to the right from left edge, and proceed as in basque, except must add one size to the bust measure.

In cutting the material, *care must be taken that the grain of the cloth runs precisely the same as indicated by the fine lines in the cuts.*





Ladies', Misses' and Children's Perfect Fitting Drawers.

REFERENCE WILL BE TO DESIGN G.

1st. Take measure from waist band, outside of leg to just below the knee.

2d. Take measure around the body over the fullest part of hip, to which measurement add for fullness eight inches for large sizes, six inches for medium, and four inches for small.

N. B.—Only use one-quarter this entire measurement in drafting the garment.

3d. Take measure around the waist to which measure add for gathers or darts eight inches for large sizes, six inches for medium, and four inches for small.

N. B.—Only use one-quarter this entire measurement in drafting the garment.

4th. Take the measure around the knee to which measure add for fullness from two to five inches to suit.

TO DRAFT THE DRAWERS.

fold your material lengthwise, keeping in mind you are cutting the back and front of one leg together; this when cut and opened out, forms a perfect pattern.

To Draft First Measurement,—measure from dot A to dot B length required.

To Draft Second Measurement,—make dot C half-way between A and B then measure square across at right angles from dot C to dot D the ($\frac{1}{4}$) width required.

To Draft Third Measurement for the Front Part,—measure square out to right from dot B the ($\frac{1}{4}$) width required to dot E, draw straight line B to E. Then place hole U at dot D with curved edge at dot E, and line E to D.

For Back Part—use straight edge of chart to draw line from D to E, and continue line up to dot F, 2 or 3 inches from dot E. Draw straight line B to F.

To Draft Fourth Measurement—make dot G at right of A across bottom of leg, the width required. Place hole U (wrong side up) at dot D, and line down curved edge to dot G.

These rules may be applied in cutting boys' pants by reducing the proportions.

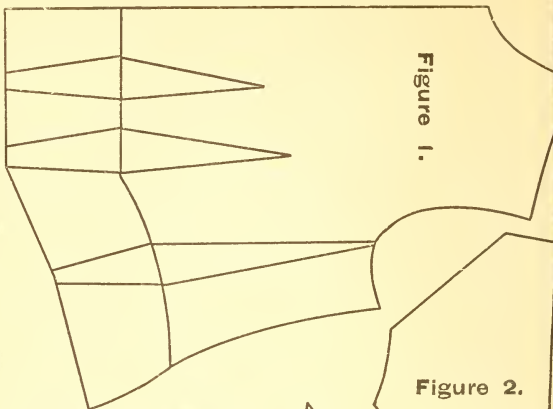


Figure 1.

Figure 2.

POSTILLION or RIDING HABIT.

To cut this garment proceed as with Basque, making Front Skirt say 4 to 6 inches long, to suit taste. Make Back Skirt say from 10 to 18 inches, or longer if desired. To shape Skirt of Side-body place hole "U" Back Chart, (wrong side up) at point a on side seam the required length from waist line, with Back form Edge at b the required length of Skirt and line a to b. The Lap in Side-body c to d should be about 1½ inches wide for buttons or may be omitted and sewed up if desired.

IN CUTTING THE CLOTH allow ¼ of an inch for all seams, except in the neck and arm-hole. Sew up the seams on the lines. In sewing up the shoulder seams, stretch the front cloth in the hollow to match the back. Turn the shoulder and side seams forward, and the darts back.

N. B.—In cutting the Side-body care must be taken that the grain of the cloth in the curved part runs the same as in the back.

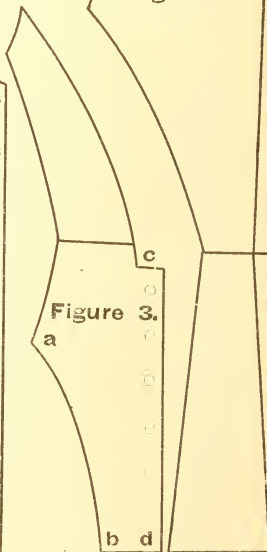
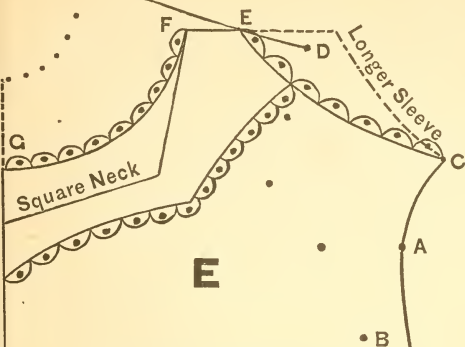


Figure 3.



SACK CHEMISE

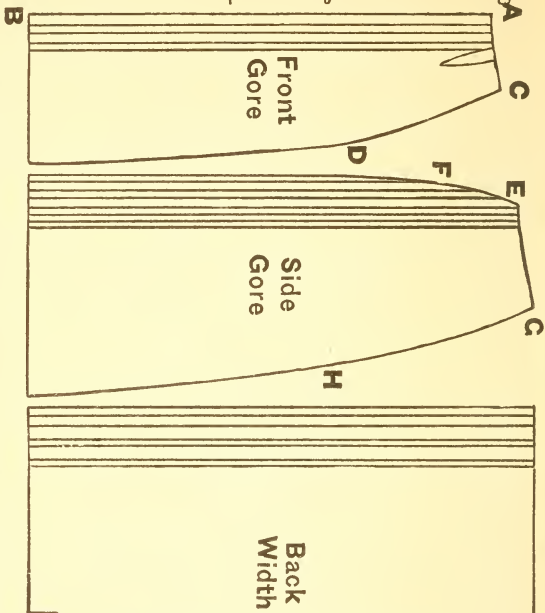
Ladies', Misses' and Children's PERFECT FITTING.

TO CUT SACK CHEMISE.—Proceed with the front chart as in plain waist, dotting out the required bust measures—leaving out the darts and lining only the shoulder and under-arm seams.

Place dart scale of chart at last dot in arm-hole, with fig. 3 at dot A and fig. 6 $1\frac{1}{2}$ inches in from under-arm line at dot B; then line only from A to point J, dot C; this forms under-part of sleeve.

Place hole U (wrong side up) at dot E, two inches up shoulder line from dot D; line along edge, E to C; make dot F square out to left 2 inches from dot E and line E to F.

Place hole U at dot F and line out neck by curved edge to G, as low as required. To form style of yoke desired, use curved and straight edges of chart to line by.

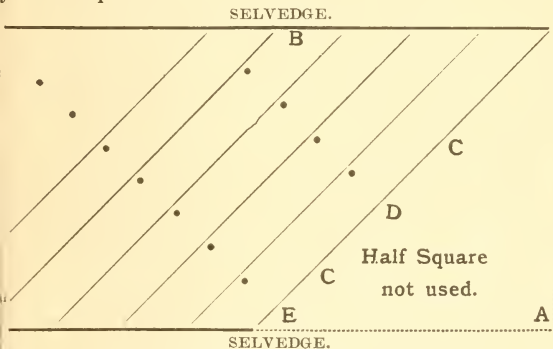


Ladies' and Misses' Skirt.

Take measures from waist band to in step in front A to B, and for back down the length required. For convenience we describe an average skirt of 24 inch material. The front gore is 5 inches at top and 12 inches at bottom; side gore, 7 inches at top and 16 inches at bottom; back breadth, 24 inches at top and bottom. It would be well to cut paper pattern for front and side gores when sizes and material cut to disadvantage.

In cutting front gore fold the material, place point J of Chart at A and line 5 inches to C, sloping up about 1 inch. Place point J wrong side up at C and line full length of dart scale to D. CUT GORE OFF by placing point J $1\frac{1}{2}$ inches on at E and line along dart scale out to nothing about 8 inches to F. CUT GORE OFF at G 7 inches wide, down 15 inches or more to H, using dart scale wrong side up with point J at G to line by.

Place the selvedge of the cloth along the edge next to you on the table. With the right hand fold over point A to B, and cut through the fold at C C, removing the half square piece not to be used. Place the square end of back chart at D, and measure off along scale, square out at right angles from edge of cloth, the width of biases required, repeating like measurement from E, then line from edge to edge through these dots on which to cut off your bias pieces.



AGENTS' GREETING.

By sending you this new circular we take pleasure once more in reminding you of the advance steps we are continually making in the art of dress-cutting. It is less than 3 year ago that our wonderful sleeve system first made its appearance, since which time more than 30,000 have been sold. Our self-fitting chart is growing no less appreciated, and doubling up in sales every year.

We have in view for the future many inventions which we hope to complete, to the benefit of every owner of a Cornwell Self-fitting System. Few desires are greater in our hearts than to know the name, address and occupation of each and every one of our chart purchasers, that we may send something of value to them from time to time.

We will always be pleased to reply to any question sent us concerning cutting, new styles, material, etc., etc. - Yours most respectfully, **WILLETT CORNWELL.**

—SELF-FITTING—

System for Cutting Sleeves

Of all sizes, for both Children and Adults, and works perfectly in connection with the Cornwell's Self-Fitting Chart in Dress-Cutting.

DIRECTIONS.

1st. The figures in the scales "C," "D," "F," and "G," in this system, correspond with the Bust Measures as used in the Chart in cutting the dress. The same figures must be used in this system in cutting the sleeve to fit the dress.

2d. Take the length of Sleeve from the back of armhole, over the elbow to the wrist, with the arm bent.

3d. For upper part of Sleeve, place points A and B along selvage edge of cloth, dotting at "A" on the cloth as the point of beginning, then line along Scale edge from "A" toward "B," the length of sleeve required. Hold System in place.

4th. Dot holes at bust measure, in Scales C and D. Remove System,

5th. Place point "E" at the dot on cloth made in Scale "C," with the outer edge at the dot made in Scale "D" then draw a line from point "E," along Scale edge to the length of sleeve required.

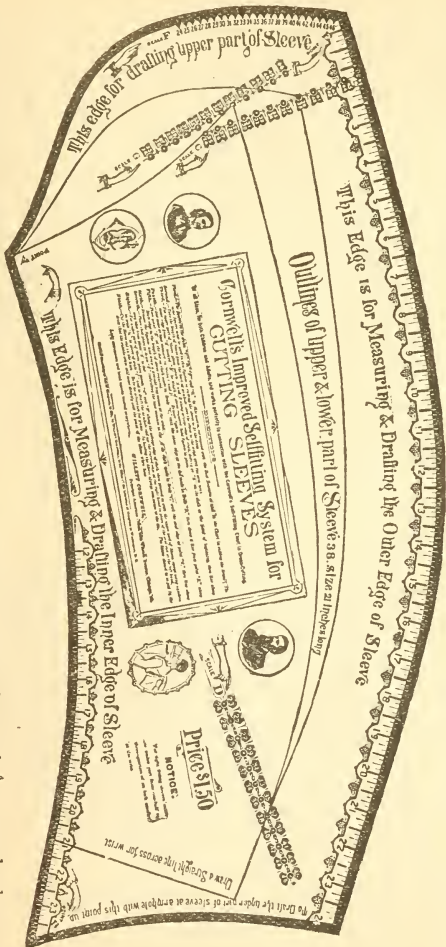
6th. Remove the System, and draw a straight line across to the wrist.

7th. Place that point in Scale "F," indicating the bust measure at the dot on cloth made in Scale "C," with the oval edge at point "A," then line along oval edge from point "A" to dot.

8th. For under part of Sleeve, place points "A" and "B" along the selvage edge of cloth, then proceed as with the upper part of Sleeve, except using numbers in scale "G," in place of scale "C," and to draft the armhole end use the curved edge at the right hand in place of the oval end at the left hand.

9th. Cut the Sleeve out on the lines. Make no allowance for seams. In basting the Sleeve always commence at the top. The Sleeve should be so put in the dress that the outside seam will come directly over the point of the elbow when bent.

THIS IS A **PHOTO ENGRAVING** of our new Improved Sleeve System which is about 24 in. long by 12 in. wide. Send Stamp for circular.

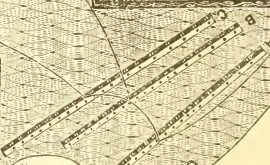


OUR NEW IMPROVED SLEEVE SYSTEM

with its figures, holes, curved edges and plain directions, is an **Accurate Rule** for cutting sleeves of all sizes, without refitting, and works perfectly in connection with the **Cornwell Chart and Dress-**

for cutting sleeves of all sizes, without refitting, and works perfectly in connection with the Cornwell Chart and Dress-

GREAT
Improvement.



PRINCIPAL
AMERICAN OFFICE,
No. 1229
Wabash Ave.,
Chicago,
Ill.



9
8
7
6
5
4
3
2
1
DART
FORM

DIRECTIONS



W. CORNELL
CHART
CHICAGO
PO BOX 1266



H

A FEW OF THE MANY
LETTERS
 WE HAVE RECEIVED DURING
 THE PAST YEARS
 RECOMMENDING OUR
 SELF FITTING
CHART
 AND SLEEVE SYSTEM.

Whitesboro, Tex., March 1, 1884.

MR. CORNWELL.—I have been selling your Charts for the past five years. I was left a widow fifteen years ago, since that time I have tried school-teaching, keeping boarders and dress-making, and I can truly say that I have never found anything that kept the ready money in my pocket to meet all demands like selling the Cornwell Charts. I enjoy selling them because they give such perfect satisfaction. Ladies say to me, after using it, Mrs. Diamond, I would not take any amount of money for my Cornwell Chart and do without it. Some say to me, I do not baste, but I take a correct measure and sit down to my machine and sew it up for I know it's going to fit. I have sold over 500 charts.

MRS. A. J. DIAMOND,
 General Traveling Agent for the State of Texas.

Watertown, Wis., Feb. 26, 1884.

WILLETT CORNWELL, Esq.—I would like to add one to the many testimonials as to the excellence of your Self-fitting Chart, which in my estimation has no equal, though I have tried many other charts, found them all imperfect compared with this, which I have used about ten years. I have been local agent for six years for this vicinity, and during that time have sold here at home over 420, with full instructions, and think I may safely say that every one has given perfect satisfaction. I sell to sub-agents and everyone that leaves my territory for other places to work. Hoping you may always prosper, I am yours respectfully,

MISS C. GARDNER.

Jeffersonville, Ohio, Feb. 2, 1884.

WILLETT CORNWELL.—Dear Sir:—I have been using your Charts for dress cutting and fitting; am well pleased with it, always having good success. I think I can sell several Charts, would like to know what your terms are to agents. Please give me your best terms by return mail for Sleeve System also. Respectfully,

KATY COMPTON.

Wheeling, Minn., Feb. 20, 1884

WILLETT CORNWELL,—Dear Sir:—Would you please send me the price of your wonderful Self-fitting Chart. I have one; I think it is a gem. I can sell some here. I want to be an agent.

LIZZIE A. JOHN.

Leaskdale, Scott Co., Ont., Feb. 4, 1884.

MR. CORNWELL,—Dear Sir:—I purchased one of your most excellent Dress Charts and am very much pleased with it. I have friends that have seen its good works and want me to take the agency. Please send me terms and instruction books, circulars, etc., and oblige yours truly,

MISS M. E. MURRAY.

CORNWELL'S IMPROVED

Philadelphia, Feb. 21, 1884.

MRS. CORNWELL.—It affords me great pleasure to be able to add my testimony in favor of the Cornwell Chart. I have used it successfully for several years, and would advise all persons who wish a perfect fitting dress, with the least trouble to purchase your system before they have such great demand that the price will go up in the same proportion.

MATTIE E. WHITE.

Philadelphia, Feb. 25, 1884.

MRS. CORNWELL.—I heartily endorse all the good things said of your Chart. I think it one of the best in use. Yours respectfully,

MRS. L. HINDLE.

Head Lady in Dressmaking Department Custer & Son, 45 No. 8th street.

Johnstown, Pa., Feb. 21, 1884.

MR. WILLETT CORNWELL,—Dear Sir:—I have come across many Charts during my time of dressmaking, but always found yours the best yet. They are easy to teach by, accurate, and perfect in every style, and of all the hundreds of your Self-fitting Charts and most elegant Sleeve Charts I have sold so far, I have not heard of any complaint yet. On the contrary, I have more calls for them every day and you may look out for big orders this season. All it wants is to show one of your Charts on the side of another, and it will quickly do away with it. I shall, before long, give you another good order. Since I started your Charts here, which is many years since, I have sold them to every dressmaker in town, not to speak of the hundreds of private parties who bought it after taking instructions how to use it. They never fail and therefore I can recommend them to every one. Yours respectfully,

MRS. MARY RUTH.

Easton, Pa., Feb. 25, 1884.

MRS. CORNWELL.—Having purchased one of your Self-fitting Charts in 1870, for my own use, and finding its great worth, I soon became your agent, and traveled with it through a number of cities and states, meeting with great success in cutting patterns and dresses of every desired style, without failing to obtain a perfect fit. In 1876 the new Improved Self-fitting Chart made its appearance, of which I sold hundreds, and have instructed both young and old with pleasure and perfection, and during my travels often met agents with different models and systems, and by close examination would challenge me that self-fitting could not be done, but after a test they always acknowledged the merits of your valuable invention. Having been in your employ for over thirteen years, I should feel that I was imposing upon the public if I should attempt to sell any other, and no lady should be without it, therefore I take great pleasure in recommending your Chart and Sleeve System to all. Yours respectfully,

LOUISA C. UHLER.

Winnebago, Wis., Feb. 23, 1884.

MR. W. CORNWELL,—Dear Sir:—Having within the last 12 months bought one of your Charts, I find it far superior to any I have used before. I have been a dressmaker in Oshkosh for the last eleven years. Please send me one of your Chart books, circulars, etc., and greatly oblige

ANNA PHILLIPS.

Piketon, Ohio, Feb. 24, 1884.

MR. CORNWELL,—Dear Sir:—I am using your Self-fitting Chart and like it very much; some of my friends wish to learn of me to use it. I should like the agency of your Chart very much for I think an agent would be sure of success with such a Chart to sell. On what terms will you sell me your Charts. Hoping I may hear from you soon, I remain respectfully,

AMANDA RHODS.

SELF-FITTING CHART.

Creal Springs, Williamson Co., Ill., Jan. 16, 1884.

MR. CORNWELL.—Having purchased one of your perfectly-fitting Charts I wish to say I think it has no equal. I am thinking of going to dressmaking for myself. I would like to know if you could send me some of your publications on dressmaking. I will send a stamp for pamphlet. Please send immediately for I may change my residence. I am a farmer's daughter. Yours respectfully,

MISS LINA ANDERSON.

Cape Neddick, Me., Feb. 11, 1884.

MR. WILLETT CORNWELL,—Sir:—I am now acting as agent for your Dress-cutting System in this neighborhood, and have already sold quite a number, for which I will send the order to you in the course of a few days. I wish you to send me all the information necessary for an agent. I wish also to know what is the price of the tracing wheels and if there is anything made in offering them for sale. I find your System takes well and that I can make ready sales for it. I purchased from Miss Wait, your agent. I remain

MRS. CHAS. TEMPLETON.

Dodd City, Fannin Co., Tex., Jan. 23, 1884.

MR. CORNWELL.—I own one of your Charts, and can say this much: I would not do without it for anything. I know of so many that would buy them that I have concluded to take an agency, if I could make the arrangements with you. Send me twelve Charts and Sleeve Systems, tracers, tape lines, and instruction books (an outfit of twelve), and I will send you the money or will do any way you instruct me to. I know a number of ladies that would buy them if they only had some one to teach them their use. I feel satisfied that I can do good work for you. Send the Charts immediately.

MISS SUE McCLARY (teacher).

Baraboo, Wis., Jan. 8, 1884.

MR. CORNWELL,—Dear Sir:—Having purchased one of your Self-fitting Charts and am very much pleased with it. I have used it six months and not one misfit; no money could buy it if I could not have another. Wishing to be classed in your drawing and the benefit you confer, I will sell some of your Charts for you. Please send me your terms, etc.; write soon. Address

EVA SCHELLENBERGER, dressmaker.

Sodus, N. Y., Feb. 25, 1884.

MR. WILLETT CORNWELL,—Dear Sir:—Having used one of your Self-fitting Charts for the past three years, and being very successful with it, I now have an opportunity of teaching some others dressmaking. I would like to know the price of the Chart, either single or by the quantity, and how soon I will receive them after sending. Please answer immediately as I am in somewhat of a hurry, and oblige,

MISS ALLIE HARVEY.

Winnipeg, Manitoba, Feb. 6, 1884.

WILLETT CORNWELL,—Dear Sir:—I have used your Improved Self-fitting Chart for over two years in Ontario. Since coming to this city, several parties have asked me to procure Charts for them. Will you kindly write me your terms now, as I may be able to make some sales. The one I have gives the very best satisfaction possible. I could not dressmake without it. Yours truly,

A. L. ALLARDYCE, 25 Ross street.

Feb. 16, 1884.

Lizzie S. Torrence, of Harshaville, Pa., says: I like your Chart very much after using and selling it for years. I have found your Sleeve System to be very successful. I never saw anything to equal it. Inclosed find names of last class taught.

CORNWELL'S IMPROVED

Delta, Leed Co., Ontario, Jan. 7, 1884.

MR. W. CORNWELL,—Sir:—I purchased one of your Charts three years ago and have been using it ever since with good success, and wanting to purchase one or more, and wishing to know your terms or get an agency, as there is no agent near here. I think I could do well as I am dressmaking under the instructions of your invaluable Chart. If you see fit I would be glad of the agency.

MRS. G. N. HUFFMAN.

Orr, Jackson Co., Minn., Jan. 5, 1884.

MR. CORNWELL,—Dear Sir:—I purchased one of your Self-fitting Charts and learned to cut five years ago, and I have done some very nice work with it and I never had over one hour's instruction in all, but I am very much pleased with it and would like your terms for all kinds of your Systems, as I wish to teach several others to cut. I am a teacher of public schools, a farmer's wife, and somewhat of a dressmaker. Please send me price list as I wish to purchase several Charts of you and teach others, and oblige

MRS. EMMA STODDARD.

Fort Plain, N. Y., Jan. 10, 1884.

WILLET CORNWELL,—Dear Sir:—I would like a Chart and Sleeve System as soon as convenient. I don't think there is any system that will compare with your Chart and Sleeve System. I have an apprentice who wants one. I am in hopes to have a little time so I can introduce your Chart. Enclosed find \$—. Yours respectfully,

JENNIE A. CAMPBELL.

Reading, Pa., Jan. 31, 1884.

MR. CORNWELL,—Dear Sir:—Please let me know how you furnish your Improved Self-fitting Dressmaker's Chart to a dressmaker. This is my occupation and I shall shortly need a few of them to supply my apprentices. I find the Chart to be a perfect, never-failing rule in fitting. Yours respectfully

MARY A. GRUBER, 207 North Sixth street.

Doniphan, Hall Co., Neb., Jan. 14, 1884.

W. CORNWELL,—Dear Sir:—Enclosed find money, for which send me twelve of your folding Charts and Sleeve Systems. I have been using your Chart for six years, during which time I have been a very successful dressmaker. I have been almost too busy to sell many of your Charts. I have moved to this place and think I can sell your Chart without any trouble. Will you please tell me how you sell Charts by the hundred; have lost what you sent me, last summer, and I have forgotten your terms. I have already sold the Charts which I now send for so will patiently await arrival. I close hoping to hear soon.

MRS. M. M. HARRELL.

Hopkinton, Mass., February, 1884.

MR. W. CORNWELL.—Please send me one of Cornwell's Improved Self-fitting Charts as soon as possible. I am a dressmaker and have used your Chart for three years. I cannot find any fault with it whatever; it is just splendid. I have learned several how to cut by your Chart, and they all think the same as I do. Please send as soon as possible. Address as above, box 267.

LIZZIE MURPHY.

Brownsville, Minn., Feb. 20, 1884.

MR. CORNWELL,—Dear Sir:—I wish to ask you for a favor. Would you please send me the agency for the Charts, and will you please send me the price list. I want to try and canvass some. I learned dressmaking. I have one of your Charts and like it ever so much; it is just splendid and always fits. I remain yours truly,

MINNIE BASKA.

SELF-FITTING CHART,

Alanthus, Mass., July 30, 1883.

MR. WILLETT CORNWELL.—Dear Sir:—I purchased five of your Self-fitting Charts about two years ago, and have sold all of them. They have given entire satisfaction so far as I have learned. But owing to sickness I have neglected to report my success to you. I think your Charts are quite a saving of time and patience. I would not take several times the cost of mine and do without it, for I prize it very highly. Yours respectfully,

C. M. GRANTHAM.

Johnstown, Pa., Oct. 14, 1883.

MR. W. CORNWELL.—About nine months ago I purchased one of your truly Self-fitting Charts, and would not part with it no way. I have been doing plain sewing for some time; could have done dressmaking had I known how to cut and fit, as I do now. Since using your Chart I have cut and made several dresses which gave entire satisfaction. Seeing in your circulars you wished to know the names of all using your valuable Chart, I give mine herewith.

MRS. E. H. READY.

Huntsville, Tex., Oct. 26, 1883.

MR. WILLETT CORNWELL.—Sir:—Some time since I purchased your Chart and instructions from your agent, Mrs. Diamond. Afterward I bought 12 Charts for the purpose of securing the agency. I think the Chart more than a success, and want you to give me your agency terms immediately. I also wish the names of those to whom I have sold Charts classed together with my own in your sewing machine prize drawing for the sewing machine at the close of the year; you will find the list of names below. Very respectfully,

ELLEN EASTHAM.

Dunkinsville, Adams Co., O., Dec. 27, 1883.

MR. CORNWELL.—Dear Sir:—I was an agent for your old Chart and was very successful in selling. I made clear one day \$27. I have used the new one for seven years, with splendid success. I always thought I would get the agency for your new Systems, as they are still better and so much easier learned. I wouldn't take ten times the cost of mine and do without it. You will please send me four of your Charts with sleeves.

M. M. SCOTT.

Ganges, Allegan Co., Mich., Nov. 3, 1883.

MR. WILLETT CORNWELL.—Dear Sir:—Please send me by mail one Cornwell Self-fitting Chart and new Sleeve System for cutting dresses.

MRS. HELEN MILLER.

P. S.—We have used one of your Self-fitting Charts and Sleeve Systems now eighteen months, and we find it to be a perfect system for dress-cutting; we cut by its aid with perfect success, without being taught by any one. Yours respectfully,

H. M.

Westfield, Chautauqua Co., N. Y., Dec. 31, 1883.

MR. CORNWELL.—Sir:—Four years ago I took of Mrs. Frankland in Michigan an agency for your Charts. Immediately after sickness and death came near me and so placed me that I could do nothing with it. Since then I have used the Chart with complete success. I could not do without it. Now another lady here wants one, and as there are none of the kind hereabouts I hope to sell a number right here as soon as they see that others besides me can use it as well. Please send me information concerning agencies, etc., what you will furnish Charts for, immediately, as she can hardly wait. I hope to do some good work for you here and yet beyond here. Hoping to hear from you soon, I remain a firm friend of your peerless chart. Yours respectfully,

JULIET S. CHAMBERLIN.

SELF-FITTING CHART.

Rochester, N. Y., Dec. 14, 1883.

MR. WILLETT CORNWELL.—Dear Sir:—Are your supplementary diagrams for basques, etc., sent free? If so, please send a few to my address. I am about to start on a trip south and westward, (first going as far west as Aurora, Ind., and perhaps into Illinois, where I have relatives). I shall want a lot of your Systems, for I do think it an excellent thing. It is what its name implies—"Self-fitting." Hoping to hear and receive soon. I am in need also of Charts. Please tell me what you charge by the hundred. Inclosed please find stamps for return postage. Please write at once, stating terms, etc., and oblige,

M. L. CHAUNCEY.

N. B.—This lady is called the best dressmaker in the city.

West Union, Fayette Co., Iowa, Dec. 13, 1883.

MR. W. CORNWELL.—Sir:—Inclosed find postoffice order for \$—, for which please send me four of your Charts with sleeve. I have used those sent before. My apprentices are going out to other towns with them, which will probably call for others. I feel such perfect trust in the Chart that I am not at all anxious about their success, as I have when I was using other kinds. Send to the address as above, and oblige,

Miss SUE FOX.

Mount Vernon, Baltimore Co., Jan. 26, 1883.

MR. W. CORNWELL.—Dear Sir:—I am a dressmaker and have used your Chart for more than a year. I prize it very highly and would not part with it for one hundred dollars if I could not get another. I would like to get the agency for this place, if there is no other. I do not know of any other; also of Montgomery and Prince George's counties. I have a great many relatives living in those counties. Please let me know by return mail. Truly yours,

Miss M. EDITH FARRALL.

Crystal Springs, N. Y., June 20, 1883.

MR. CORNWELL.—Dear Sir:—I received your package and I thank you for it. I like your Improved System very much; I could not do without it, as I have a good deal of cutting to do. I can sell them easily. Yours respectfully,

ANN PITCHER.

Philadelphia, March 4, 1884.

MR. CORNWELL—I have had your Chart in use ten years. It does all that is represented for it to do; I do not wish anything better. The Cornwell Chart is the fourth one I have learned to use and find it the best; gives entire satisfaction to my customers. I would have answered sooner but sickness prevented.

Mrs. L. FORBES, No. 928 N. Eleventh Street.

MRS. J. W. WELLS, Dressmaker, No. 882 State St., says: I have been a dressmaker for 24 years, and in that time have used a great many different models and charts, but until I purchased a "Cornwell" I never felt that I had anything that I could confidently rely upon, but now after thorough and repeated trials during the past 9 months I am free to say that your chart by far excels any other that I have ever heard of or used. In fact, I consider it *perfect* in all respects. In dressmaking I find that no alterations are ever required, so accurate are all its rules.

The measurement to the hollow of the shoulder fits all shaped shoulders and the rule for subtracting the waist measure from the bust measure, fits elegantly any shaped bust, no matter how full it may be.

This chart is very easily learned, as I had but about two hours instruction in its use to begin with.

SELF-FITTING CHART.

Avening, Ont., Canada, July 9, 1883.

MR. W. CORNWELL, CHICAGO, Ill.:—I received your letter-circulars—terms to agents, etc. I consider your terms satisfactory. I have already purchased one of your Charts from one of your agents, Mrs. Crozier, of Thornbury, and am glad to find it contains so much detail in cutting, and I also feel confident that the simplicity of its working is such as will meet the approval of all who use it. I am a tailor and cutter, so you will understand that it is only occasionally that an opportunity presents itself for me to make a sale. However, I consider your terms very good; I will do what I can for you and myself by selling the Charts. Yours respectfully,

JOSEPH KEE.

El Dorado Springs, Mo., May 4, 1883.

MR. CORNWELL.—Dear Sir:—Would it be imprudent to ask "special" terms for three Charts with sleeves? I am sure I can sell two; I want to keep one for my little girl, Etta May, aged 10 years. She can draft a plain waist from watching me use the Chart. She asks me every time I cut a dress if I won't send and get her one—she must have one of your Charts, for they discount all others in simplicity and perfection. I feel like it is a duty to teach her to cut by measure and by "the infallible rule," I term it. I will send as soon as I hear from you, without fail, but my means are too small to send for six or I would send without delay. If my health will permit I shall try and sell a few out in the country. Doctors have given up my case. I shall work for you; when you cease to hear from me I shall be "no more." Yours very respectfully,

MRS. J. H. PONSLER.

Circleville, Ohio, June 21, 1883.

MR. CORNWELL.—Dear Sir:—I will inclose money for one Chart for Mrs. Moore. I am very sorry I am not able to send for more. I have three girls learning the Chart. I have poor health and can not do any better at present. I have found your Chart everything it is represented to be. By it I can cut and fit a dress in bed; I have done it frequently. I try to sell all I can, and do all I can for it.

Yours, and oblige,

SARAH J. DOWNS.

Oakley, Macon Co., Ill., June 15, 1883.

MR. WILLETT CORNWELL.—Dear Sir:—I purchased one of your Self-fitting Charts about three years ago and would not do without it for \$50. What would you furnish eight for? There are several young ladies want me to learn them to use it. Yours truly,

MISS KATE ALSBURY.

Peach Grove, Ky., Jan. 23, 1883.

MR. CORNWELL, CHICAGO, Ill.—Having purchased your excellent Chart from Miss Bell McLachlan, I can with pleasure acknowledge the perfect satisfaction it gives. Also your Sleeve Chart is just splendid. There are several ladies that want your Self-fitting Charts, also the Sleeve Chart. Will you please tell me your terms and how I can get them by return mail. Send all information necessary, so I can send to you for the charts immediately. Yours in haste,

MISS ALIA ROUSE.

Coaticook, Prov. Quebec, Jan. 25, 1883.

MR. CORNWELL.—Dear Sir:—I have your Chart; have used it four years. Think it the best of all others. Three of my friends wish to have one. The one I have is your Improved Self-fitting Chart. My occupation is dressmaking and cloakmaking. In four years' practice not one bad-fitting dress have I had. Please what would be your terms for a dozen or more Charts? I hope to hear from you as soon as convenient, and oblige,

E. M. BLOSSOM.

CORNWELL'S IMPROVED

Holton, Ind., June 18, 1883.

MR. W. CORNWELL.—Dear Sir:—I have given your Improved Self-fitting Chart a thorough trial, and find it much superior to any I ever used. Inclosed please find payment for 4 Charts and Sleeve Systems and one 10 cent stamp for circular. Please send immediately and oblige,
MISS FLORA LEMEN.

Ottumwa, Iowa, Oct. 23, 1883.

MR. W. CORNWELL.—Sir:—Inclosed please find post office order, for which send me (by return mail if possible) four Self-fitting Folding Charts. All that I have sold give good satisfaction. I can't see how I did without one myself so long. I expect to always keep one, for I would as soon do without my sewing machine. I expect to sell more after these.
MRS. A. W. BUCHANAN.

Biggs Sta., Butte Co., Cal., June 15, 1883.

MR. CORNWELL.—Dear Sir:—I have sent a post office order to pay for two improved Cornwell Charts and the new Sleeve System. Please forward as soon as you get this letter, and oblige. I would say I cannot take the agency, as I haven't the time at present, and do not know of any lady who will take the agency. I have used your Chart for five years and have made a splendid success with it as a dressmaker. It may be so I can take the agency soon. Please send by mail, and oblige,
EMMA SPARKS.

Salt Springs, Ga., June 16, 1883.

MR. WILLETT CORNWELL.—Sir:—I write to know what you will let me have a Sleeve System for. As I have one of your Charts, I would like the Sleeve System to complete my dressmaking. I would not be without the Chart for ten times the worth of it. Perhaps I can sell some Charts for you in the fall. I have sold 12 Charts that I got from your agent, Mrs. Price. I will try and see what I can do. I want the Sleeve System for myself. Please write me; you will find a stamp inclosed to pay postage. Yours respectfully,
PRISCILLA DINEAN.

Rome, Oneida Co., N. Y., Dec. 29, 1883.

MR. WILLETT CORNWELL.—Sir:—Please find inclosed \$—, for which I wish you to send me one of your Improved Self-fitting Charts with Sleeve System. Having used your Chart the last three years I find nothing equal to it, and presume I could sell more of them than I have, but am not in circumstances that I have the means to order a quantity at a time. As I am an old friend to the Chart cannot you give me a certificate of agency and allow me to sell them? Very respectfully,
MRS. M. M. TRENHAM.

Mill Creek, Bourbon Co., Kan., June 29, 1883.

MR. CORNWELL.—Sir:—I would like to know your terms to agents for your excellent Chart. I think I could sell some in Fort Scott, unless you have an agent there. I obtained mine of Mrs. McCollister, who lives five miles south of me. I can say for a truth that the Self-fitting Chart does all that it claims to do. I got mine about one year ago last March. I have not had the least bit of trouble; can take the measure and cut and make a dress without changing a stitch, and feel that I could not get along without it. It is like the love of God in the heart—too good a thing to keep still. I want to persuade others to buy them. Yours truly,
MRS. NANNIE STEWART.

Alpena, Mich., June 3, 1883.

MR. CORNWELL.—Dear Sir:—I have used your Chart for over 10 years, with the greatest satisfaction for myself and others. I could not get along without it any more than I could without my sewing machine. Very respectfully yours,
MRS. H. E. SMITH.

CORNWELL'S IMPROVED

Grant Park, Kankakee Co., Ill., Nov. 12, 1883.

MR. WILLETT CORNWELL.—Dear Sir:—Will you please inform me by return mail what you can furnish me the Cornwell's Self-fitting Chart with Cornwell's Self-fitting System for Cutting Sleeves for? I would like to act as agent for you, as there is no agent in this neighborhood. There are a few wanting Charts right away, if they are as good as recommended, and I can say for one, that I don't want anything any easier and more reliable than the Cornwell Chart. I have used one of them for a little over a year, and have never had to refit a single waist; but it is useless for me to waste my time telling you what it will do. Hoping to hear from you soon, I remain yours very respectfully,
ELIZA REED.

Joplin, Jasper Co., Mo., Nov. 6, 1883.

MR. W. CORNWELL.—Inclosed you will find money, for which I wish you to send me one dozen Charts and Sleeve Systems. When I receive these it will make 28 I have got from you. All I have sold give satisfaction. It is most two years since I saw your advertisements and sent for a Chart. I have cut a great many dresses by it, basques, loose and tight-fitting waists and polonaise; in fact, I never use patterns for anything, and I have never made a misfit or had a dress to alter; in fact, I have cut dozens of dresses and never had any of them to find fault. I might have done better with the Charts, but I have been sick and crippled so I could not canvass as I would, but I think I shall do better now. Please send me designs for ladies' clothing by mail.
MRS. MARY J. STRICKLAND, Dress Maker.

Sibley, Osceola Co., Iowa, Oct. 22, 1883.

MR. CORNWELL:—Having used your Chart for several years, I now take the liberty of addressing you. I am a seamstress, consequently I am at a great many places. I owe all my success to your Chart, and think I could do good if I had an agency. Please write me as soon as convenient, as I have a number of friends who are waiting for me to hear from you, as they all wish a Chart. Do you ever send your goods C. O. D? Respectfully,

NANNIE EDMONDSON.

Henrietta, N. Y., Sept. 3, 1883.

MR. WILLETT CORNWELL, CHICAGO.—Dear Sir:—Having used your world-renowned Chart for some eight years, I am very much pleased with it, and know that dresses can be made to fit elegantly without once trying on. I am persuaded there is no system invented possessing superiority over it. I am a dressmaker. Please send me some of your books and price-list; I wish to become one of your agents. Several here would like to purchase your Charts.

Yours truly,

MRS. MOLLIE F. DAWSON.

Orion, Mich., July 10, 1883.

MR. CORNWELL:—Please send me a price-list of your Dress Charts, also a description and price-list of your Sleeve Charts. I have owned one of the Dress Charts several years, and it gives complete satisfaction. Yours respectfully,
MRS. D. L. BROWN.

Beacon, Mahaska Co., Iowa, June 20, 1883.

MR. CORNWELL:—I am reading through a circular that was sent to Emma Harrold. I saw that you wished to know the address and occupation of each of your Chart purchasers. I have had one of your improved Self-fitting Charts for seven years and I like it splendidly. I do not see how we could get along without it. I have four sisters beside myself, and I do the sewing for all and for some other people. I do not know what my occupation will be yet, but I think I will follow the dressmaking business. Yours truly,

CLARA McCREA.

SELF-FITTING CHART.

Fond du Lac, Feb. 5, 1884.

MR. CORNWELL,—Dear Sir:—Please send me a couple of your printed envelopes, as I wish to send for Charts right away. How much are they now? You remember me as buying several of you, I have used your System ever since I did dressmaking, which is eleven years. I will need several pretty soon for apprentice girls. Some say when I get tired of dressmaking I will take an agency and go traveling for awhile. I could sell heaps of them. I am counted the best dressmaker and cutter. I received first prize for the best fitting dress on the most disagreeable figure that could be found in the city at the State Fair. Send envelopes as soon as possible, for I want to send for Charts by return mail. Please address
MRS. NORRIS BROWN, corner First and Macy street.

Philadelphia, Feb. 25, 1884.

MR. CORNWELL,—Dear Sir:—I take pleasure in saying that I have used your Chart constantly for the past twelve years, during which time it has given me perfect satisfaction, and I know of no other for which I would be willing to exchange it. I have also taught your System for several years and have always had the most pleasing results from my pupils. Hoping your Chart may be as successfully used by others as by me, I am yours very respectfully,
L. E. YARNALL, 1202 Chestnut street.

Red Wing, Minn., Jan. 2, 1884.

MR. W. CORNWELL,—Dear Sir:—I have been using your Self-fitting Chart for three or four years. I don't think it can be beat, for I have the very best of luck fitting dresses; I work at dressmaking; there are several ladies who want Charts. Please tell me what terms and how I can get your Charts and Sleeve System of you. I want to send you the money as soon as I can hear from you, for as many as I can sell. Please send me all the information necessary.
Yours respectfully,
MRS. MATHILDA ERICKSON.

Poughkeesie, N. Y., March 3, 1884.

W. CORNWELL,—Dear Sir:—Having purchased one of your Improved Self-fitting Charts four months ago of a dressmaker residing in Wilbur, N. Y., I wish to say that I think it has no equal. I am a dressmaker, and since using your valuable Chart I give entire satisfaction to my customers. Please send me agents' terms and oblige,
MISS TINA MATHIES, 42 N. Water street.

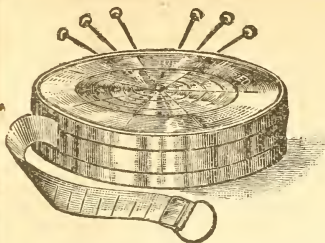
Sedalia, Pettis Co., Mo., July 12, 1882.

WILLETT CORNWELL, Esq.—Dear Sir:—Inclosed find \$ for one of your Improved Self-fitting Charts. I have used your most valuable Chart with satisfaction to myself and customers for several years, and feel that I could not do dressmaking for the public without it. I have had the misfortune to be burned out, and lost everything, even my Chart; have nothing to work with left. I feel that the first thing to begin business with again is to secure another Chart. Have had the offer of the Magic Scale and many others since the fire, but could not think of using any but yours. Please send by return mail, and oblige,
Yours most respectfully,
MRS. L. J. MUNCEY, Dressmaker.

Burlington, Vt., April 13, 1882.

WILLETT CORNWELL.—Sir:—Here enclosed you will find P. O. order for the required amount of Charts, which please send by mail. You will also find 25 cents enclosed for postage. If this is not enough, please send C. O. D. Trusting you will oblige us immediately, we are,
Respectfully,
WARD & HEMPY, Dressmakers.

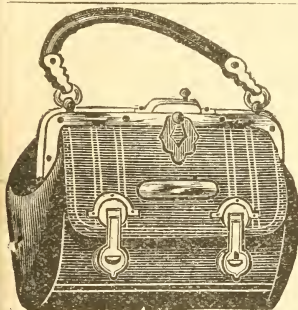
P. S.—We use your Chart and do not think there is another that can compete with it in the United States.
W. & H. ✓



Tape Measures.

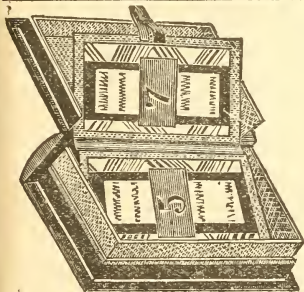
60 inches long, Mirror on one side, and Perpetual Calendar on the other, nickel plated; 75c. each, 6 for \$2, per doz., \$3.50.

NICKEL SPRING.—Plain, 60 cents each; \$2.50 per doz.
COMMON TAILOR.—Tapes 60 inch, serviceable, 10 cents each; 40 cents per doz.



Ladies' Hand Bag.

Leather, 7 inches, Nickel Trimmed, outside pockets; \$1 each; per doz., \$9.



Book Needle Case.

A perfect gem in the shape of a book, bound in velvet and ornamented with gold flowers; 60 cents each, per dozen, \$3.25.

Velvet Spiral Tidy Fasteners.

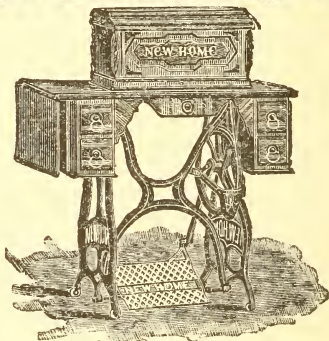
Green, Red and Blue; 35c. per doz. or \$3.50 per gross.

Paper Lap Boards, Each, \$1.00.

BUY THE BEST!

The Light Running

NEW HOME



600,000 NOW IN USE.

Every Machine Warranted, and every warranty held good. Write direct to the Company if you have any trouble. The

NEW HOME

stands at the head for Embroidery, Chenille and arrasene work. It has the very latest and improved Attachments, and our New Styles cannot fail to please you. Send for circular.

NEW HOME SEWING MACHINE CO.,
248 State Street, Chicago.

BOILED DOWN.

WE WANT AN ACTIVE, ENTERPRISING LADY TO WORK FOR US IN EVERY LOCALITY.

To procure your best efforts to introduce our System of Cutting in your vicinity, we will agree to sell to you direct, at our **lowest prices**, the same as we sell to agents, **any number** you may wish—**one Chart with Sleeve System, \$2.50; 4 Charts, \$6; with Sleeve Systems, \$2 extra; one dozen Charts with Sleeve Systems, \$20;** this last order entitles the purchaser to a **Certificate** of exclusive **Agency**. Hope you may be our agent.

For this System you would **have to pay** an agent at retail from **\$5 to \$8**, while many successful agents even get **\$10 to \$12** for it.

Now, if you will send us \$2.50 in our return envelope, **we will return** to you by mail one of our **Improved Self-Fitting Chart and Sleeve Systems**, (providing you do not take advantage of a larger order at lower prices,) when you will soon find that you would **not take \$10** for your purchase, but would have on hand a **System** that will cut every garment worn by Ladies, Misses and Children, **without paying a profit** to a middle party. **You can buy all you want of us** and sell them anywhere there is no agent at work, and **make the usual profit** in the business.

To speedily introduce our System into your locality, we make this **liberal promise** that if you send us an order, and afterward wish to exchange back, we will return you the money free.

Now, if you cannot send us an order yourself, but will induce some smart business **Woman** to take our offer and **send us an order** for not less than **\$8**, we will **give you** a Chart and Sleeve System **free**.

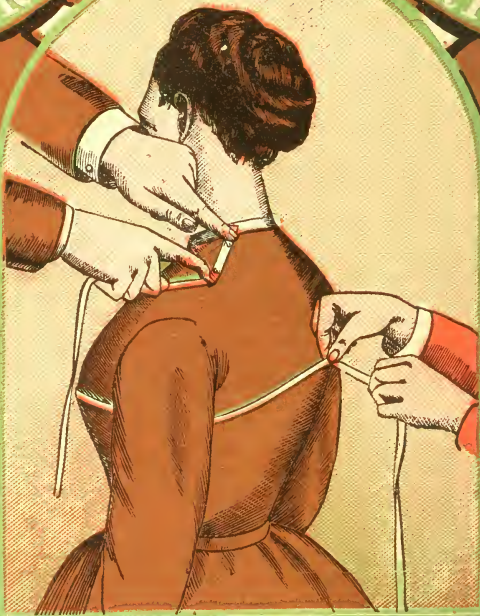
If you can do no more for us, **be kind enough to send us** the names and addresses, plainly written, of all the Dressmakers, Milliners, School Teachers, Agents, Canvassers and Smart Business Women you know of, and **we will reward you for it**. Send stamps for our **New 68-page Book** on Dressmaking. **WILLETT CORNWELL,**
1229 Wabash Ave., Chicago.

LIBRARY OF CONGRESS



0 014 061 943 7

TRADE MARK



REGISTERED FEB 11-1873

REISSUED, MAY 30-1876

GET OUR NEW
SLEEVE SYSTEM
SEND FOR PARTICULARS

LIBRARY OF CONGRESS



0 014 061 943 7

